

# 1960 W 42nd Avenue, Vancouver

\$3,250,000



This beautiful and brand new home with A/C sits on Kerrisdale area, quite but just a short block from shopping and restaurants .Functional layout with high ceilings, Dream kitchen with supreme finish & top of the line appliances . 3 great size bedroom with in suit bathroom on 2nd floor . Fully finished basement with two bedroom.Walking distance to Kerrisdale Comm Centre, Magee Secondary , Point Grey Secondary , Maple Grove Elementary, Quilchena Elementary, also close to private schools crofton House, York House & St.George's . Transit Lines to UBC and all kinds of shops , Bank & facilities. Move in condition , Must See!

## KEY INFORMATION

MLS® R2901131

Residential Attached

Kerrisdale

5 Bedrooms

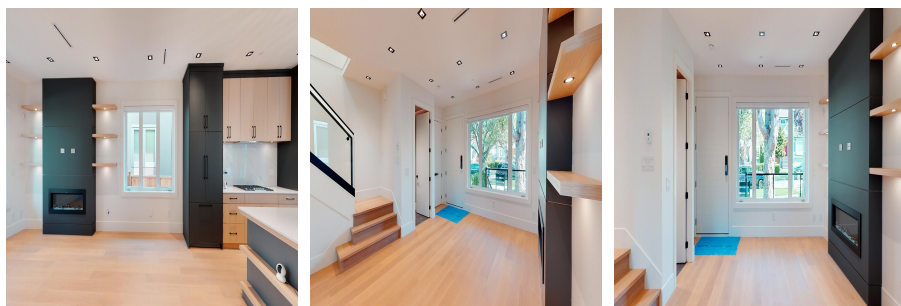
5 Bathrooms

2,084 SF

## FEATURES

Year Built: 2023

Listed By: 1NE Collective Realty Inc.



rennie