

236 W 12th Avenue, Vancouver

\$3,498,000



An exceptional opportunity to acquire a prime 50'x125' lot located within the Broadway Corridor Plan, offering immense development potential. Currently held as long term investment property with outstanding tenants. Located just a block from city hall, Broadway skytrain station, grocery stores & more. 2 blocks from Cambie Village & 5 min drive to downtown. This A-1 located property has excellent Development Potential: The Broadway Corridor Development Plan allows for significant redevelopment possibilities on this site. A truly bluechip investment & holding property!

KEY INFORMATION

MLS® R2901396

Residential Detached

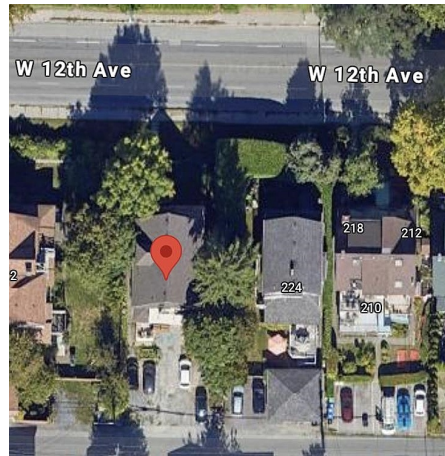
Mount Pleasant

4 Bedrooms

6 Bathrooms

4,335 SF

6,250 SF Lot

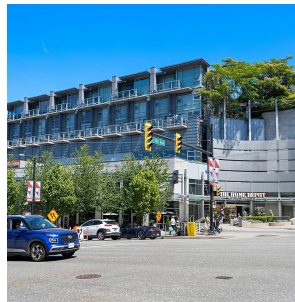


FEATURES

Year Built: 1910

Views: CITY & NS MOUNTAINS

Listed By: RE/MAX Select Properties



rennie