

203 6111 Dyke Road, Richmond

\$1,698,800



FINAL HOME REMAINING AT THE SHORE!
The Shore Steveston is a boutique waterfront community featuring 13 luxurious residential units with private gated garages, direct elevator access into homes, and tranquil river views from every home. This 2 bedroom unit offers a southwest facing private 210sf deck. Modern artisanal styling blends natural refinement in this designer Pebble Colour Scheme. Nestled along the Fraser River, each unit plan has been deliberately arranged to connect with the magnificent light, harbour, greenway park, and river views. All homes enjoy spacious decks with serene water views. Open house Sundays 2-4pm.

KEY INFORMATION

MLS® R2901749

Residential Attached

Steveston South

2 Bedrooms

2 Bathrooms

1,280 SF

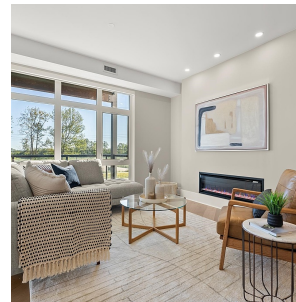
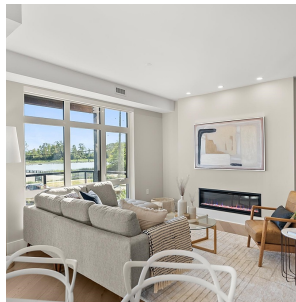
\$699.08 Maintenance Fees

FEATURES

Year Built: 2023

Views: FRASER RIVER

Listed By: RE/MAX Westcoast



rennie