

# 6505 Oldfield Rd, Central Saanich

\$2,400,000



Absolutely stunning! Spanning an expansive 9.94 acres with an additional 3.05 acres, this exceptional property encompasses two separate titles, offering immense potential and versatility. Nestled within the picturesque Oldfield Valley, the land boasts gently sloping terrain, providing a serene and idyllic setting. The exceptional property features a charming 3 bedroom 1 bathroom farmhouse, a barn and a serene pond towards the back of the property. Situated in a highly sought-after location, this property represents a rare opportunity to acquire a significant piece of land in a coveted area. Additionally, for those seeking even more space and potential, this property can be sold in conjunction with the neighboring estate at 6485 Oldfield Rd. Combined, these properties offer nearly 23 acres of pristine countryside, allowing for an even grander vision to come to life. (id:56120)

## KEY INFORMATION

MLS® 969538

Residential Detached

Oldfield

3 Bedrooms

1 Bathroom

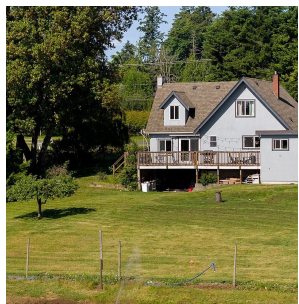
3,595 SF

565,845 SF Lot

## FEATURES

Year Built: 1920

Listed By: RE/MAX Camosun



rennie