

803 138 E Esplanade, North Vancouver

\$968,000



South facing 2 bedroom + den suite at the Pier Water-front Community. Have access to Pinnacle Hotel amenities including indoor swimming pool, gym, sauna and hot tub. Practical open layout concept, good privacy from the separate bedroom design, 9 foot ceiling, stainless steel appliances, heat pump for central cooling and heating comfort. Comes with 1 parking and 1 storage locker. Convenient location at Lower Lonsdale, steps to shops, restaurants & Seabus connecting Canada Line to Airport and Richmond. Easy to show. Measurement by professional, to be confirmed by buyers.

KEY INFORMATION

MLS® R2902498

Residential Attached

Lower Lonsdale

2 Bedrooms

2 Bathrooms

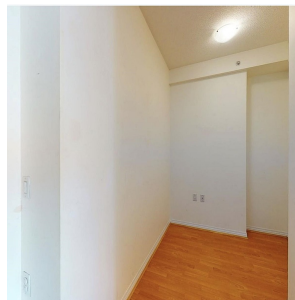
989 SF

\$773.65 Maintenance Fees

FEATURES

Year Built: 2007

Listed By: Anson Realty Ltd.



rennie