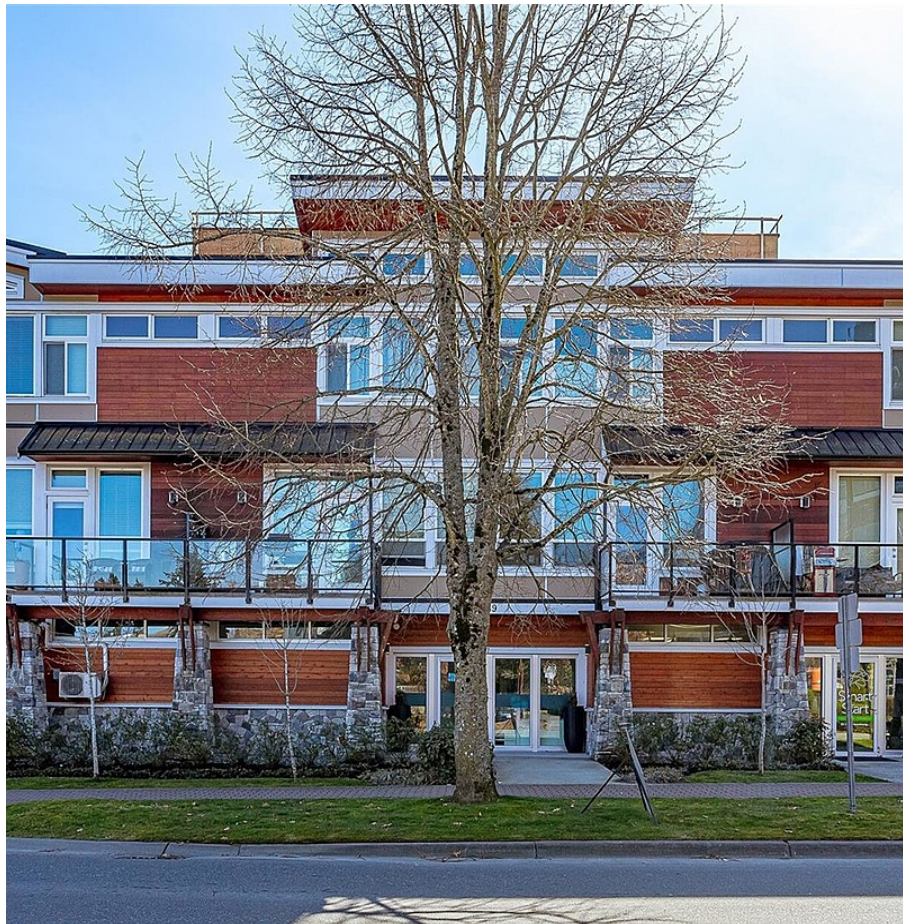


111 689 Hoffman Ave, Langford

\$449,000



NEW PRICE!! Great rare opportunity to save \$\$ & time by owning this liveWork strata unit in the heart of Langford. Offering 748 sq ft, this unit has a separate commercial entrance located centrally, just off of Veterans Memorial Pkwy, ideal for walking traffic. The residential and commercial spaces are nicely separated allowing a home style business to have the feel of standalone retail, with the added bonus of residential. The bachelor unit is complete with a full kitchen, built in Murphy bed and a 4 piece bath that can be shared with the workspace. Both spaces have a heat pump for optimal temperature control, comfort and efficiency. This location provides easy access to Langford city centre and the MU1A zoning allows for a variety of permitted uses including but not limited; financial, schools, music training, offices, personal services; hair dresser, massage, acupuncture, nail salon. and retail. (id:56120)

KEY INFORMATION

MLS® 969756

Residential Attached

Mill Hill

1 Bedroom

1 Bathroom

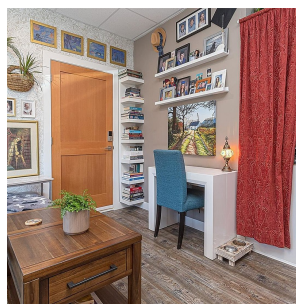
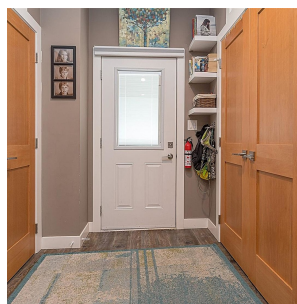
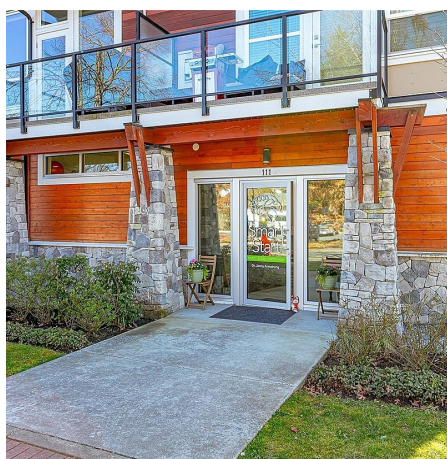
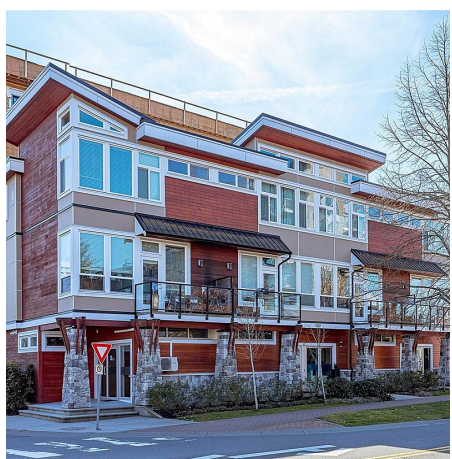
748 SF

724 SF Lot

FEATURES

Year Built: 2017

Listed By: Sutton Group West Coast Realty



rennie