

708 6538 Nelson Avenue, Burnaby

\$499,000



RARE OPPORTUNITY FOR SAVVY INVESTORS AND FIRST TIME HOME BUYERS!! Welcome to MET II, a contemporary high-rise building developed by Concord Pacific. Located in the heart of Burnaby, Walking distance to Metropolis, Central Park, Bonsor Community Center, public transit to satisfy the most versatile lifestyles. This air-conditioned one bedroom, one full bathroom, comes with an open concept kitchen, spacious living room for entertaining with friends. Amenities including swimming pool, hot tub, sauna room, bowling alleys, and club house. Get it now to have a place you call home. 1 parking and 1 locker. Motivated seller, easy to show. Book your private showing today!

KEY INFORMATION

MLS® R2904033

Residential Attached

Metrotown

1 Bedroom

1 Bathroom

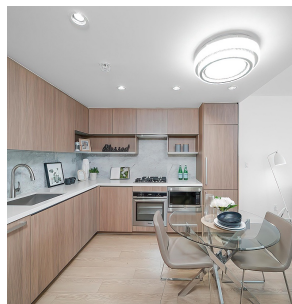
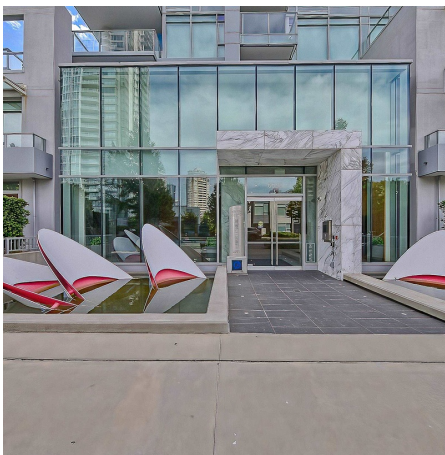
508 SF

\$303.36 Maintenance Fees

FEATURES

Year Built: 2017

Listed By: rennie & associates realty ltd.



Howard Don
604.786.9998
hdon@rennie.com
rennie.com/howarddon

rennie