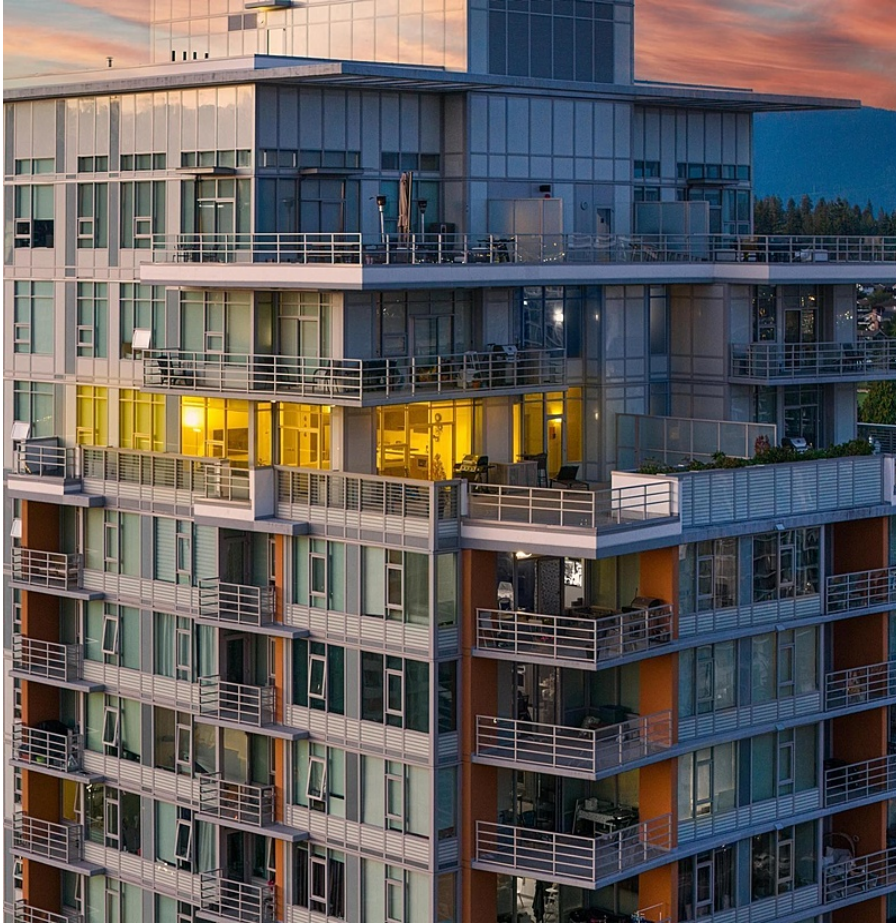


# 2704 530 Whiting Way, Coquitlam

\$1,498,000



This stunning sub-penthouse with high ceilings features a spacious 1465 sqft private terrace, offering breathtaking 270-degree views of downtown Vancouver, Metrotown, the Fraser River, and North Shore Mountains. Enjoy a luxurious master bedroom with a walk-in closet and heated marble flooring, complemented by an open kitchen, dining, and living area. Premium KitchenAid appliances, high-grade laminate flooring, and 2 parking stalls are included. Stay active with over 14,000 sqft of amenities, including a fitness center and yoga room. the patio furniture shown is virtual, and the structures are designed by Coalfield Architects, pending final approval. RENTED M2M \$5500

## KEY INFORMATION

MLS® R2904108

Residential Attached

Coquitlam West

2 Bedrooms

2 Bathrooms

1,140 SF

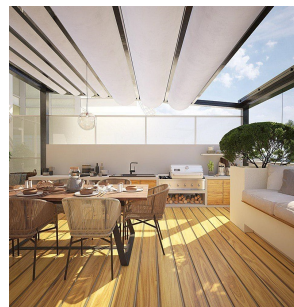
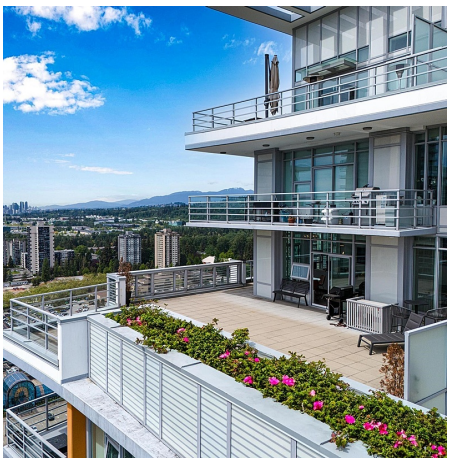
\$399.00 Maintenance Fees

## FEATURES

Year Built: 2018

Views: DOWNTOWN;FRASER RIVER;NORTH

Listed By: Sutton Group-West Coast Realty



rennie