

# 101b 1224 Richardson St, Victoria

\$629,900



\*This unit qualifies for the developers limited time \$10,000 cash back\* 2 bedroom suite available in "1224 Richardson"! On a quiet tree lined street in Rockland are 3 CHARACTER INSPIRED buildings with 24 custom condominiums. These homes are designed to fit the scale and character of the neighbourhood while providing housing opportunities in a fantastic location at a great price. Each residence has it's own separate entrance, over height ceilings, gourmet kitchens and Kimberly Williams Interior Designs. Richardson street has recently been added to the City's main bike route, and this project embraces this type of transportation. Along with separate bike storage, there is an on-site MODO Car, and each purchaser receives a lifetime MODO membership. Location/Price/Design--unbeatable! Walk score 89, bike score 92 which is "biker's paradise". Move in today! (id:56120)

## KEY INFORMATION

MLS® 970038

Residential Attached

Rockland

2 Bedrooms

1 Bathroom

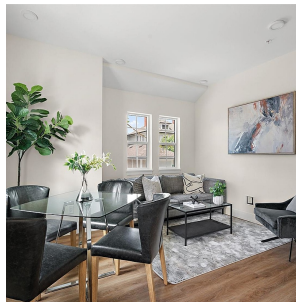
665 SF

655 SF Lot

## FEATURES

Year Built: 2024

Listed By: Coldwell Banker Oceanside Real Estate



rennie