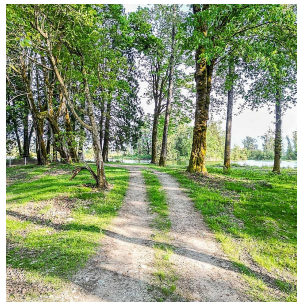
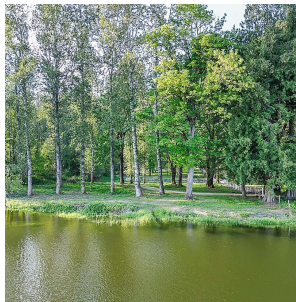


# 44190 Malcolm Road, Mission

\$1,599,000



This stunning property at 44190 Malcolm Rd. is zoned for agriculture & offers many possibilities! It features a NEW fully renovated 2 bed, 1 bath home plus a secondary 2 bed, 1/2 bath guest cabin, plus 1,200 feet of waterfront, with year-round fishing and low bank beach ideal for paddleboarding and kayaking. The property includes over 11.5 acres, with old growth maple & cedar trees, trails, ponds, creeks and your own painted turtle preserve. You'll also have access to endless fresh water and a run-of-the-river power building ready for renewable energy. A 5-minute drive to Sandpiper Resort and Harrison River, 30 minutes to Sasquatch Mountain, 20 minutes to Mission and just 1 hour 15 mins to Vancouver, come and enjoy the deep-country lifestyle with world-class recreation at your doorstep!

## KEY INFORMATION

MLS® R2903514

Residential Detached

Lake Errock

4 Bedrooms

2 Bathrooms

1,289 SF

501,811 SF Lot

## FEATURES

Year Built: 1956

Views: Nicomen Slough

Listed By: Top Producers Realty Ltd.

**rennie**