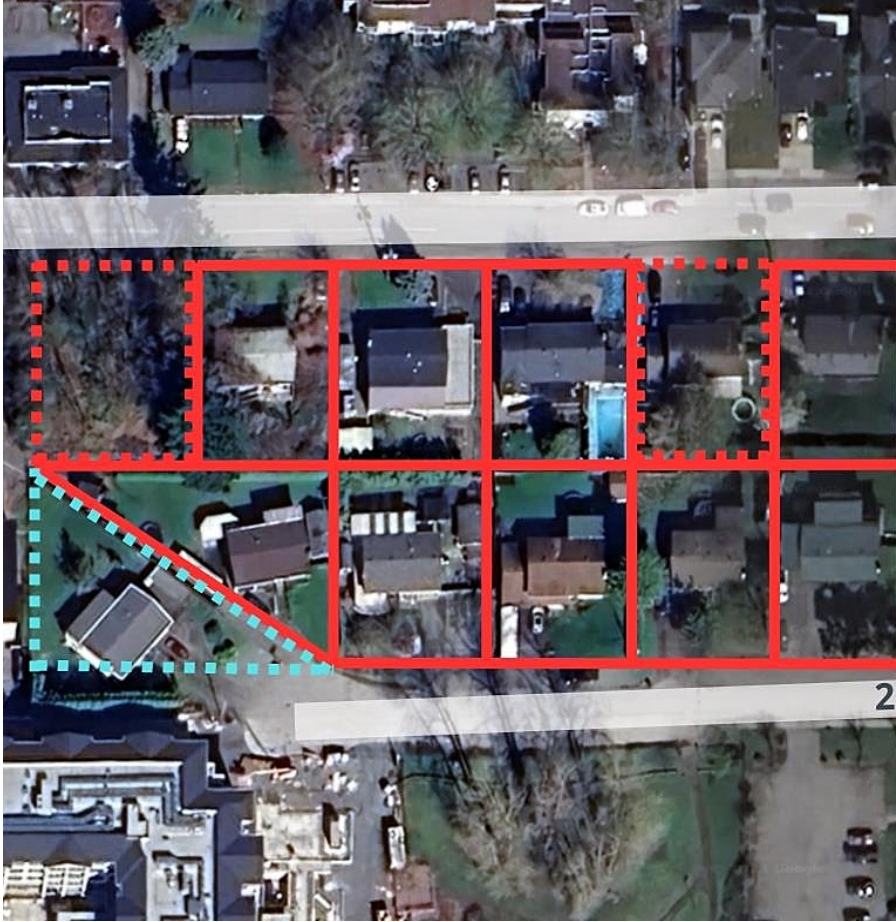


27245 29 Avenue, Langley

\$2,208,000



Discover a prime real estate opportunity at 29 & 29A Ave and 272nd Street in Aldergrove, Langley. Spanning 1.937 acres and nestled beside the picturesque Rotary Park, this site offers tranquil surroundings on a serene inside street, just moments away from Aldergrove's bustling core. Steps from 272nd Street and Fraser Highway, this prime location is near emerging developments and poised to become a cornerstone of the Aldergrove Core Area Land Use Plan. Capitalize on the city-supported plan for up to 6-storey residential apartments, aligning with the vision for a vibrant community that blends modernity with natural beauty. This strategic and vibrant setting enhances the appeal for potential residents, offering a perfect balance of convenience and tranquility.

KEY INFORMATION

MLS® R2904402

Residential Detached

Aldergrove

4 Bedrooms

2 Bathrooms

1,938 SF

9,104 SF Lot

FEATURES

Year Built: 1973

Listed By: RE/MAX Real Estate Services

rennie