

1207 699 Whiting Way, Coquitlam

\$699,900



Boutique development PRECIDIA by renowned Ledingham McAllister. Centrally located in the Lougheed Town Center neighbourhood for a wide array of life amenities. Southwest facing 1 bedroom with dreamy sunset VIEWS! Bright layout features 9ft ceiling height, expansive windows, and large balcony!. Interior includes a full-size S/S appliance package with gas cooktop, front-loading washer/dryer, and whisper quiet VRF air conditioning. Impressive amenities include a fully-equipped fitness centre, fireside lounge, guest suites and a beautifully landscaped outdoor terrace with children's playground. Walking distance to Skytrain station, restaurants, shops and services. Call for your private showing.

KEY INFORMATION

MLS® R2904276

Residential Attached

Coquitlam West

1 Bedroom

1 Bathroom

597 SF

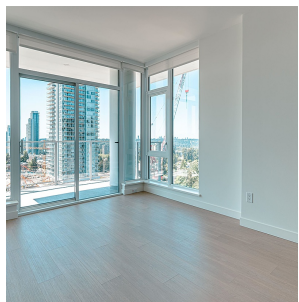
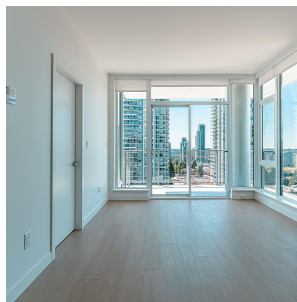
\$288.33 Maintenance Fees

FEATURES

Year Built: 2024

Views: CITY, MOUNTAIN

Listed By: RE/MAX Crest Realty



rennie