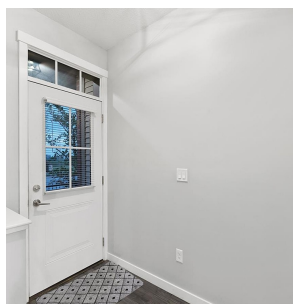
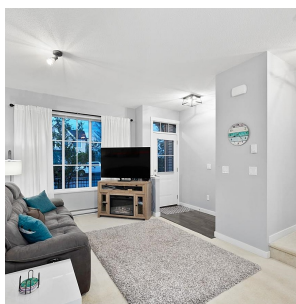


11 30989 Westridge Place, Abbotsford

\$689,000



Amazing 2 bedroom/3 bathroom townhome in BRIGHTON at WESTERLEIGH! This beautiful home has street level front access. Inside you'll find the open-concept living room, dining room, kitchen and nook, with the huge bonus of a POWDER ROOM ON THE MAIN! Upstairs the primary suite has an extra large closet and ensuite with double vanity. The oversized second bedroom, another bathroom, and laundry area complete the upper floor. Ownership at Brighton comes with exclusive access to the 8,400+ sq ft of resort-style amenities at Club West, including outdoor pool and hot tub, fireside lounge, theatre and games rooms. You'll be steps from the all-season Discovery Trail and minutes from the 90+ shops, restaurants and services at High Street. Don't miss out, call to book your private tour!

KEY INFORMATION

MLS® R2904339

Residential Attached

Abbotsford West

2 Bedrooms

3 Bathrooms

1,212 SF

FEATURES

Year Built: 2015

Listed By: Homelife Advantage Realty (Central Valley) Ltd.

rennie