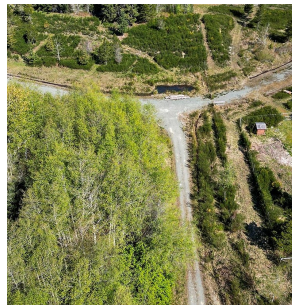
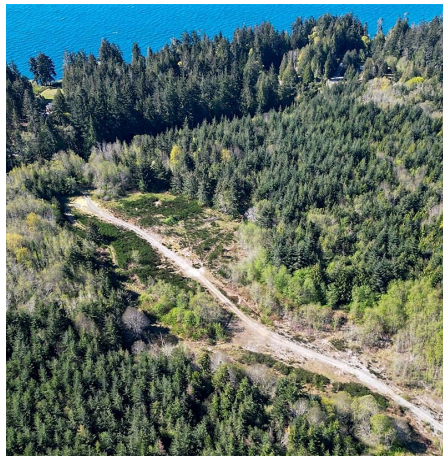


# 9330 Invermuir Rd, Sooke

\$1,250,000



Welcome to your slice of West Coast paradise! Nestled near Sooke, this expansive 38.4-acre lot boasts the perfect blend of tranquility and potential. Moments from beaches, parks, and ocean on Vancouver Island's West Coast, embrace the coastal lifestyle, just 14 kilometers from the vibrant community of Sooke, where modern amenities meet natural wonders. Picture-perfect and ready for your vision, this rectangular forested lot offers a level terrain and Rural 2 Zone that provides for a wide variety of agricultural opportunities. A well-developed internal road system, 2 drilled wells, and numerous cleared areas, plus existing fenced areas and a greenhouse make this property ready for your ideas. With approximately 300 meters of frontage on Invermuir Road, accessibility meets seclusion in this coveted location. **SUBDIVISION POTENTIAL** for 3 lots with zoning permitting minimum 10-acre lots. Whether you're seeking a private retreat, an investment opportunity, or a canvas for your dream estate, this West Coast acreage near Sooke invites you to make your vision a reality. Seize the opportunity to create your own paradise in one of British Columbia's most coveted regions. (id:56120)

## KEY INFORMATION

MLS® 970077

Land Only

Sheringham Point

0 Bedrooms

0 Bathrooms

0 SF

1,672,706 SF Lot

## FEATURES

Listed By: RE/MAX Camosun

rennie