

# 11192 286 Street, Maple Ridge

\$3,888,000



Welcome to your private paradise! This spectacular custom 4,188 sqft log home features 180 degree panoramic views while nestled on a sprawling 5.01 acres. Incredible wood work through out the home. Tons of natural sunlight into games room, kitchen and large living room with vaulted ceilings. Upgraded kitchen with pantry is an entertainers dream with Dacor appliances, an expansive island and a dedicated eating area. Primary bedroom is on the main floor with a walk-in closet and a spacious ensuite bathroom. In the basement, the laundry and 2 bedrooms with a full bathroom await as well as a spacious living room. The property also includes a 2,780 sqft detached heated garage with 3 bay doors with space for RV parking inside w/200amp service. Amazing outdoor lighting throughout the property.

## KEY INFORMATION

MLS® R2903151

Residential Detached

Whonnock

3 Bedrooms

3 Bathrooms

4,188 SF

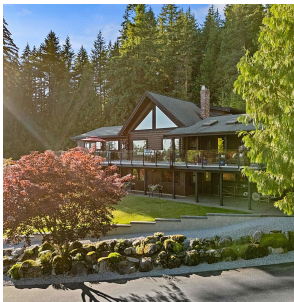
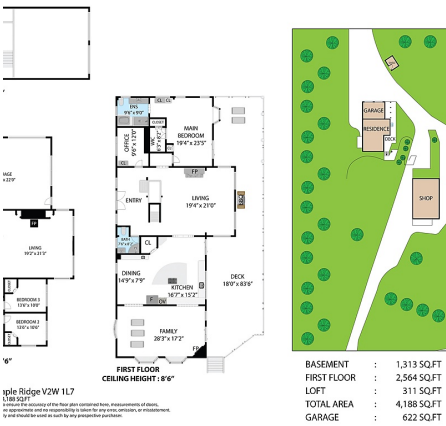
218,615 SF Lot

## FEATURES

Year Built: 1993

Views: Mt Baker/Valley Views

Listed By: RE/MAX LIFESTYLES REALTY



rennie