

1040 Jefferson Avenue, West Vancouver

\$3,098,000



Rare find a Gorgeous 2 level family home in an amazing area. Easy stroll to Ambleside Park, The Seawall, Park Royal Shopping Centre and Top-ranked schools. Functional floor plan, Quality and finishing details throughout. Large living room with high ceiling facing South backyard. 4 generous bedrooms and 4 baths. The potential one-bedroom rental suite in the back side of the house offers flexibility and extra income potential. Brand new kitchen, New Roof, New flooring and New Painting. Beautifully landscaped yard with lane access.

KEY INFORMATION

MLS® R2903711

Residential Detached

Sentinel Hill

4 Bedrooms

4 Bathrooms

3,402 SF

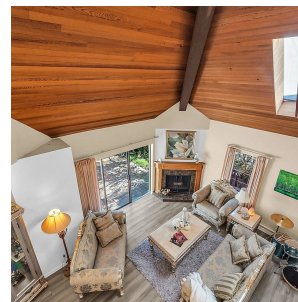
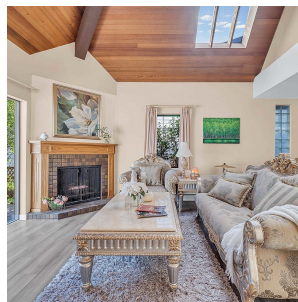
6,100 SF Lot

FEATURES

Year Built: 1980

Views: OCEAN VIEW FROM UPPER DECK

Listed By: Royal Pacific Realty Corp.



rennie