

10420 Hogarth Drive, Richmond

\$1,899,000



Great investment opportunity to own a large corner lot house in the quiet and sought after Woodward area. Revenue property and excellent redevelopment potential. Nice sized lot with wide frontage allows for lots of parking. Short walk to London Fields Park, close to Steveston Fish Market. West Dyke trails. School catchments: Maple Lane Elementary and Steveston London Secondary. South facing backyard.

KEY INFORMATION

MLS® R2904325

Residential Detached

Woodwards

4 Bedrooms

3 Bathrooms

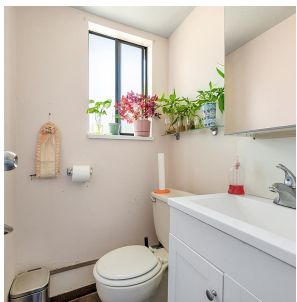
2,062 SF

7,174 SF Lot

FEATURES

Year Built: 1974

Listed By: Homeland Realty



rennie