

6152 175b Street, Surrey

\$2,000,000



Opportunity to own a massive piece of land, 13,249 SQFT LOT (83x160) by Cloverdale Town Centre. 175B Street, north of 60th Ave, is part of Draft Map of Cloverdale Town Centre Plan Update. Huge future potential, possible land assembly with neighbors. Build/Develop now or Hold for future. Short walk to all amenities including Cloverdale Arena, Curling Rink, Rec Centre, The Fairgrounds, Ball Park, and Schools George Greenaway Elementary / Lord Tweedsmuir Secondary. Close proximity to the new Cloverdale Hospital and KPU Polytech University.

KEY INFORMATION

MLS® R2904549

Residential Detached

Cloverdale

4 Bedrooms

2 Bathrooms

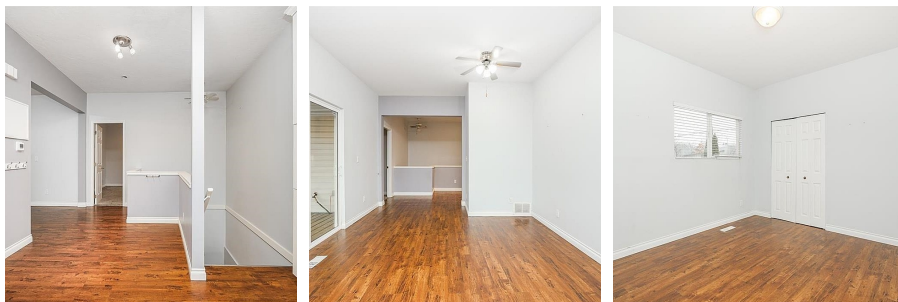
2,361 SF

13,280 SF Lot

FEATURES

Year Built: 1951

Listed By: Real Broker B.C. Ltd.



rennie