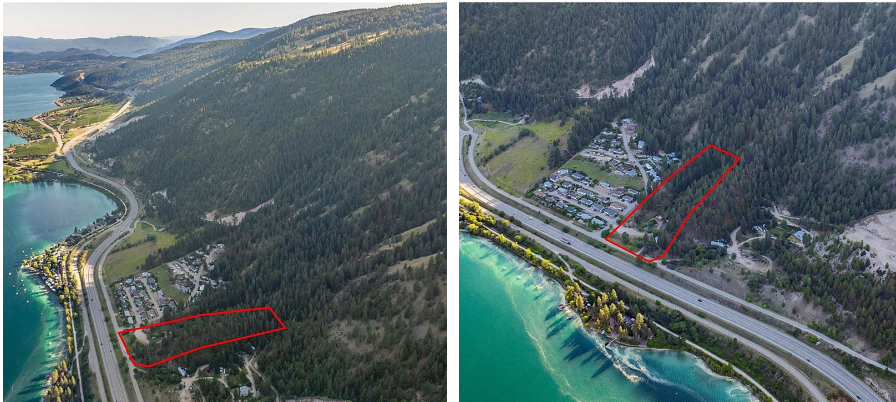


# 17680 Rawsthorne Road, Lake Country

\$759,900



Presenting an unbelievable 9.671 acre lot overlooking the pristine waters of Kalamalka Lake. PRICED UNDER BC ASSESSED VALUE. A rare offering of location, size & unparalleled lake views - a stunning canvas to build & design your sprawling custom dream-home! With an abundance of trees for creating a private retreat & paved easy access city roads to your driveway plus many services hooked up - this is a one-of-a-kind opportunity. The location is second to none nestled in the Okanagan Valley, Lake Country is highly desired for its luxurious yet relaxed environment. A region acknowledged for its world renowned wineries, flourishing orchards, world class restaurants, golfing, beaches & more! The lush valley of Lake Country also boasts top caliber parks and trails - minutes to the new Okanagan Rail Trail, 13min to top-rated Predator Ridge Resort. 20 minutes to Kelowna International Airport. It offers all seasons fun with Silver Star Mountain Resort 40 min away. Property is currently zoned RR1 - zoning for residential development on large lots & complementary uses. This allows for building compliant with the districts zoning bylaw such as one single detached house (which may contain a secondary suite); accessory buildings or structures (which may contain an accessory suite). A mobile or manufactured home as an accessory suite. Live out your future dream of creating a home business, bed & breakfast, flower farm etc. Potential Vendor Financing for a 2yr term to help while you build! (id:56120)

## KEY INFORMATION

MLS® 10319658

Land Only

Lake Country

0 Bedrooms

0 Bathrooms

0 SF

rennie