

204 2817 Clark Drive, Vancouver

\$758,000



Small apartment complex in Mount Pleasant area, comprised of 4 stratified 2 levels apartment units, see other listing on commercial, located above 2 retail/commercial units at corner of East 12th Ave and Clark Drive. All units are 2 bedrooms with electric baseboard heating, laminated & ceramic floors, 1.5 bath, ensuite laundry, skylights.

KEY INFORMATION

MLS® R2906902

Residential Attached

Mount Pleasant

2 Bedrooms

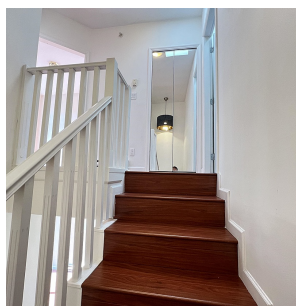
2 Bathrooms

704 SF

FEATURES

Year Built: 2010

Listed By: Panda Luxury Homes



rennie