

# 113 13458 95th Avenue, Surrey

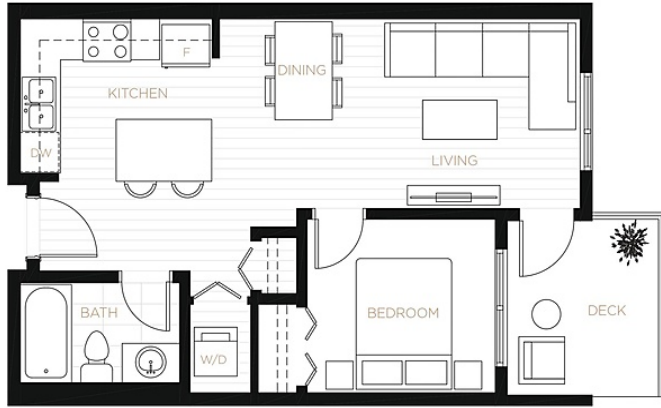
\$498,800

## GALILEA SURREY

### Floor plan measurements

Kitchen: 9'5 X 7'5  
Living room: 18'5 X 7'  
Master bedroom: 9'5 X 8'5  
Patio: 7'5 X 7'

These measurements are provided on a without prejudice basis, are estimates only and are to be independently verified if important. The Partners Marketing Group Ltd, Trevor Street PREC, and the developer of the subject strata lot take absolutely no responsibility whatsoever for any loss, or damages resulting from use of same.



This 1 Bed + 1 Bath dark colour schemed home at Galilea comes with a laminate upgrade in the bedroom (\$1000), 1 Parking, 1 Micro-Storage Locker (\$2500), and a fitness centre within the building! Located just South of Surrey Central, Galilea is minutes away from the city's shopping, entertainment, universities, and parks. A quiet residential neighborhood with central city vibes is right outside your door at Galilea, giving you the best of both worlds in this dynamic community. Homes created with you in mind, kitchens at Galilea are designed with impressive quartz stone countertops, crisp backsplashes, polished chrome fixtures, and stainless steel appliances coming together to create a stylish foot ceilings, extra wide windows, as well as modern and textured laminate throughout.

### KEY INFORMATION

MLS® R2907149

Residential Attached

Queen Mary Park

1 Bedroom

1 Bathroom

549 SF

\$284.87 Maintenance Fees

### FEATURES

Year Built: 2025

Listed By: eXp Realty

rennie