

970 Duchess Avenue, West Vancouver

\$3,258,000



LUXURIOUS BUILT DUPLEX. True quality built with high end finishings such as Miele appliances, energy efficient heating system, built in surround sound in ceiling, Marmara marble counter tops, vertical grain teak cabinets in kitchen and large recreation room making entertaining guests a breeze with a ready home theatre. Master suite features high end Italian tiles, 2 enormous walk-in closets, ensuite with his & her sinks and a large soaker tub. This spectacular residence not only features an open floor plan, but also features floor to ceiling windows, south facing allowing for ample amount of natural light but also features a beautiful yard and is walking distance to Park Royal, Ambleside beach and the Village!

KEY INFORMATION

MLS® R2908028

Residential Attached

Sentinel Hill

4 Bedrooms

5 Bathrooms

3,529 SF

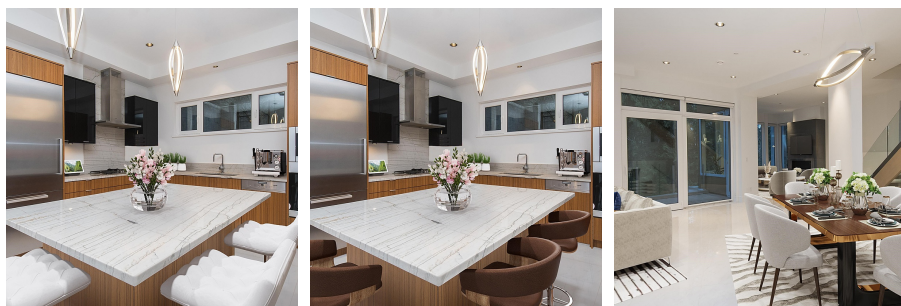
12,142 SF Lot

FEATURES

Year Built: 2015

Views: Mountain & City

Listed By: Behroyan & Associates Real Estate Services



rennie