

# 4 2951 Panorama Drive, Coquitlam

\$1,199,000



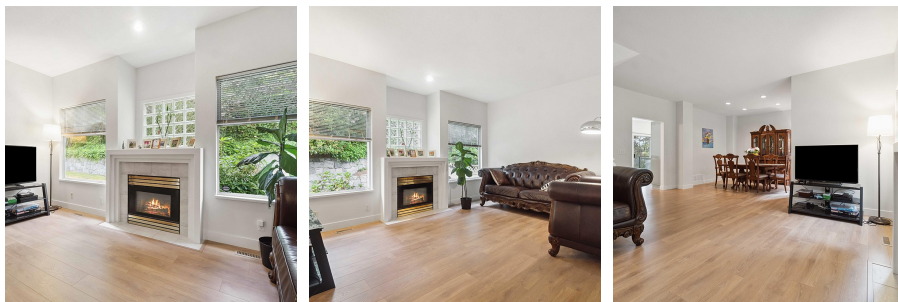
**OPEN HOUSE:** Saturday September 7th.  
Recently renovated end unit townhouse in Westwood Plateau. This 1/2 duplex-style home features a spacious, open-concept main floor with beautiful laminate flooring and lots of natural light. Upstairs, you'll find 3 bedrooms and 2 full bathrooms, including a large master bedroom with an amazing view. The basement offers a spacious area perfect for a gym or guest room. Upgrades include built-in central vacuum, washer/dryer combo unit, air-conditioning and a hot water tank replaced in 2020. Newly renovated bathrooms. Incredible location close to Coquitlam Center, SkyTrain, Centre Park, and golf courses. Super clean, shows well.

## KEY INFORMATION

MLS® R2909346  
Residential Attached  
Westwood Plateau  
3 Bedrooms  
3 Bathrooms  
2,204 SF

## FEATURES

Year Built: 1992  
Views: EAST  
Listed By: One Percent Realty Ltd.



**rennie**