

1428 Summit Drive, Coquitlam

\$3,580,000



Welcome to this fabulous, custom built Smart House. Located in the highly desired area of Harbour Chines in Coquitlam. This home was built with a functional open concept floor plan, and high ceilings. It features a gourmet kitchen, wok kitchen, a two bedroom legal suite & a media room. This house is conveniently located close to Como Lake Park, Mundy Park and Vancouver Golf Course. Close to schools, shopping and transit

KEY INFORMATION

MLS® R2909544

Residential Detached

Harbour Chines

7 Bedrooms

7 Bathrooms

5,241 SF

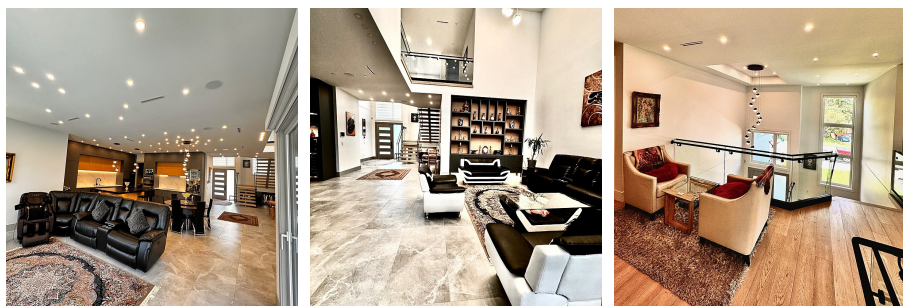
8,120 SF Lot

FEATURES

Year Built: 2022

Views: From upper floor

Listed By: Team 3000 Realty Ltd.



rennie