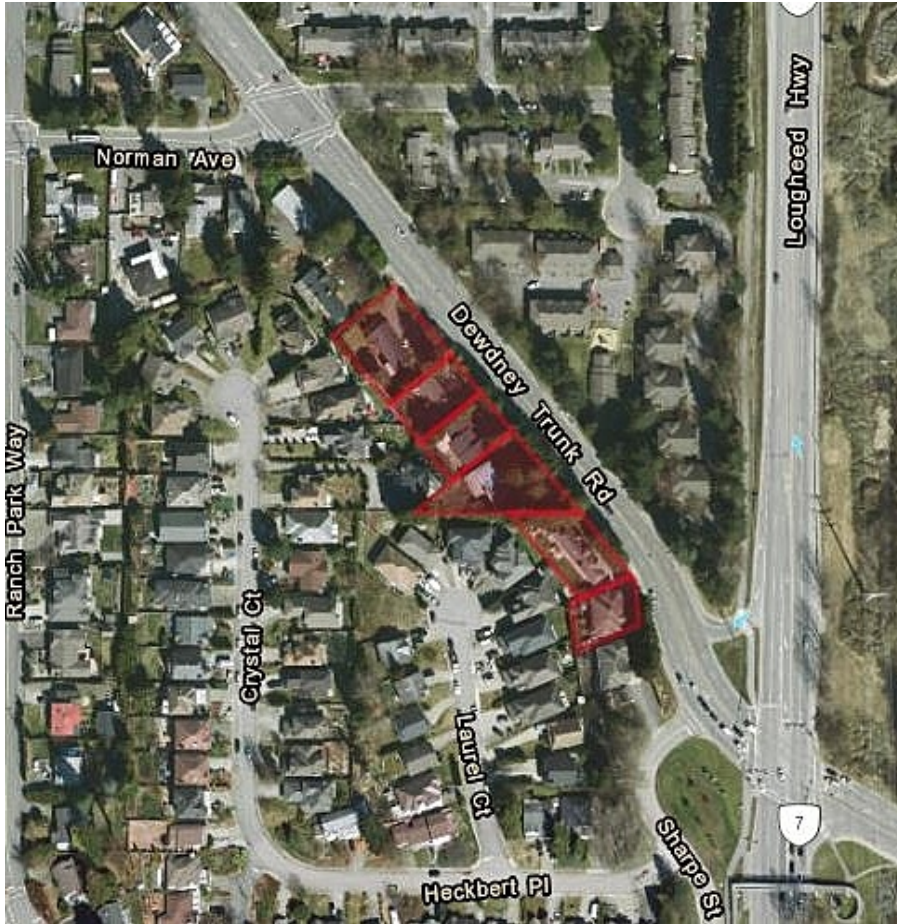


2926 Dewdney Trunk Road, Coquitlam

\$2,500,000



10-305-29318000 01/16/2013



ATTN DEVELOPERS - This 7 bed/4 bath, 6,146 SF parcel is a part of a 6-lot land assembly spanning a total of 55,912 SF with 2908, 2910, 2914, 2918 & 2922 Dewdney Trunk Road, Coquitlam. At just under 1.3 acres, this unique development opportunity is located within the highly sought-after Coquitlam Center SkyTrain TOD Tier 3 zone, offering an FSR of 3.0. Imagine building up to 8 stories in this rapidly growing urban hub, that's just a 6-8 minute walk from Coquitlam Center Skytrain and Mall or a quick bus ride down the street. Enjoy living close to key amenities with direct access to major highways, restaurants, local attractions, hospital and more! This perfectly positioned location is ready for a vibrant new community - Don't miss out on transforming this site into a landmark development!

KEY INFORMATION

MLS® R2910173

Residential Detached

Ranch Park

7 Bedrooms

4 Bathrooms

3,329 SF

6,146 SF Lot

FEATURES

Year Built: 2005

Listed By: eXp Realty

rennie