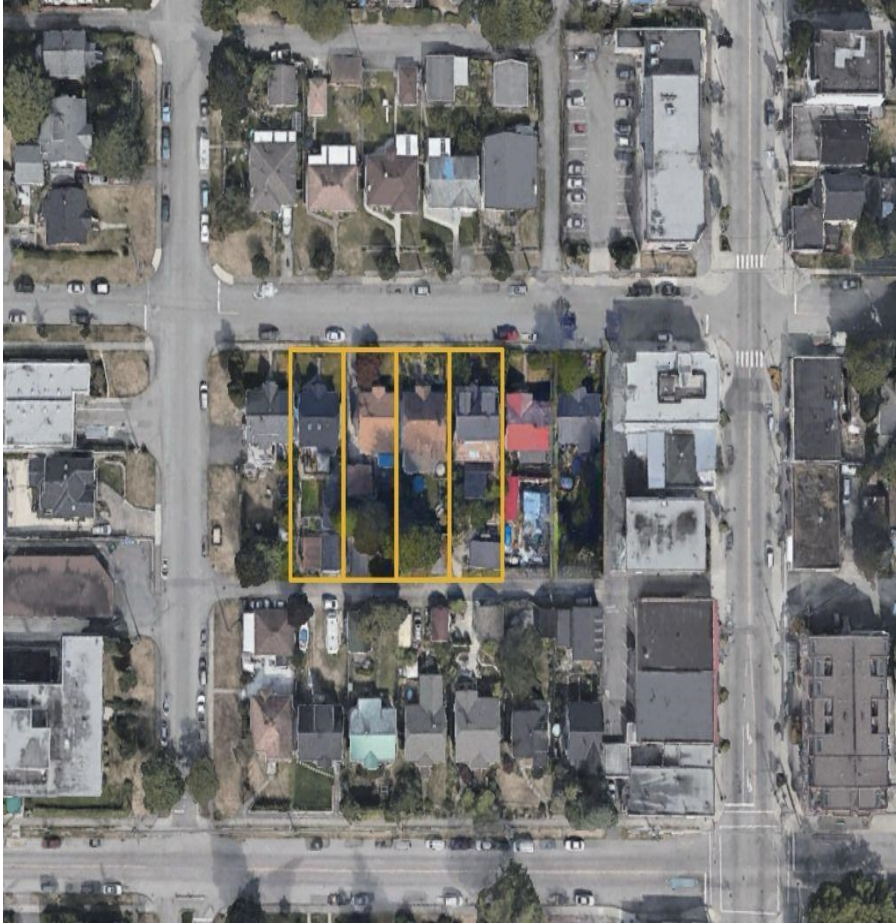


# 1218 Edinburgh Street, New Westminster

\$1,950,000



Attention builders & developers! What an incredible land assembly location that's become available. This home is to be sold in conjunction with 1212 + 1214 + 1218 + 1220 Edinburgh - 4 lots for 23,232 SF. OCP Call for Residential Ground Oriented Infill. Potential Townhouse site. Above Grade FSR .85. Below Grade FSR .15. This is an amazing location with a lot of potential, within walking distance to all amenities . Ideally situated within walking distance of nearby Moody Park and pool, schools, shops, services, transit and restaurants. The property is being sold "as is, where is." The land measurements have been obtained from B.C. Assessment, the interior room measurements are approx. Pls refer to the listing details for more info.

## KEY INFORMATION

MLS® R2910564

Residential Detached

West End

5 Bedrooms

2 Bathrooms

1,590 SF

5,808 SF Lot

## FEATURES

Year Built: 1936

Listed By: eXp Realty