

# 15 2525 Shaftsbury Place, Port Coquitlam

\$795,000



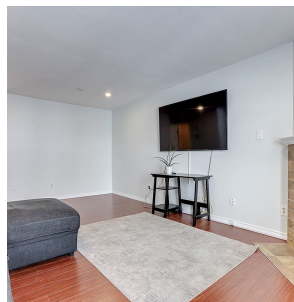
Port Coquitlam's most comfortable, convenient AND affordable townhome is back! This beautiful and spacious unit has everything you need within walking distance. All levels of schools, shopping, public transit, highways, you name it, you got it! Enjoy leisurely strolls in nearby parks or indulge in retail therapy at Coquitlam Centre, Save-on Foods, Superstore, Club Pilates, and more!. With its prime location and modern amenities, this home is your gateway to a vibrant lifestyle in Port Coquitlam. OPEN HOUSE: October 20th SUNDAY 2PM-4PM

## KEY INFORMATION

MLS® R2910880  
Residential Attached  
Woodland Acres  
4 Bedrooms  
3 Bathrooms  
1,678 SF

## FEATURES

Year Built: 1989  
Listed By: Royal LePage West Real Estate Services



rennie