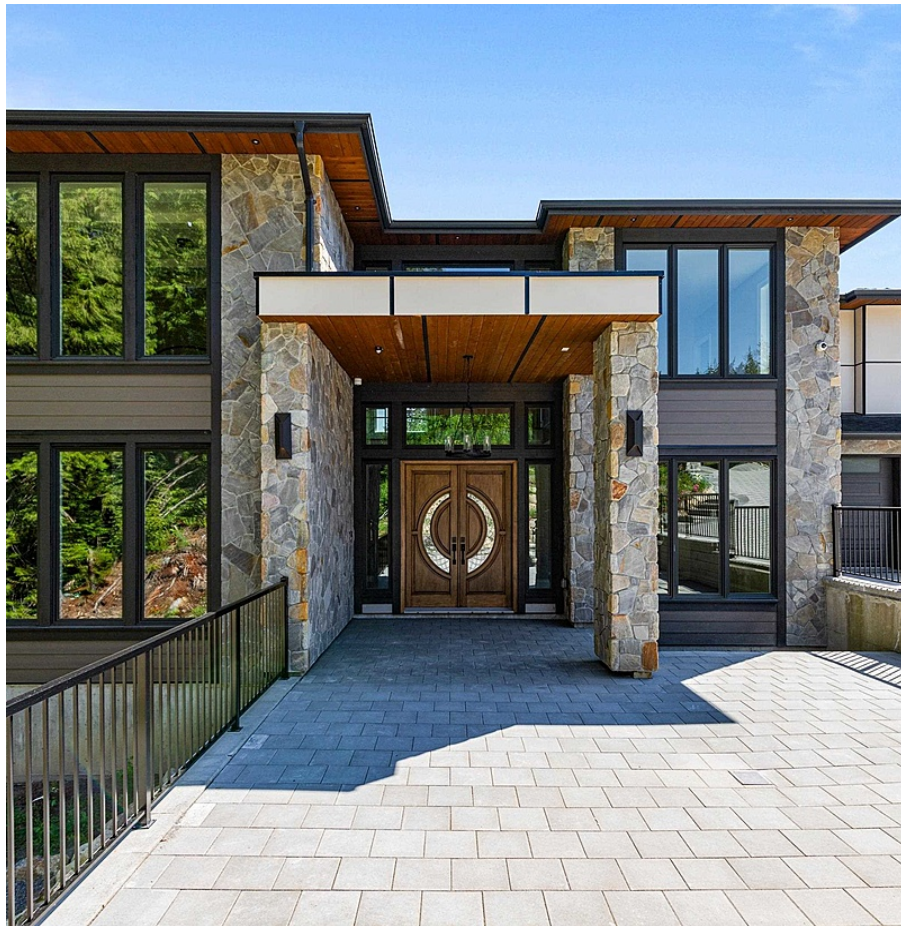


12230 267 Street, Maple Ridge

\$4,380,000



NOVEMBER 24 OPEN SUNDAY 1 -3 "
STUNNING MANSION" plus 2 bedroom Coach House (totalling 10,075 sq ft of finished living space) on a pristine parkside 1.599 acres of usable land at the end of a cul-de-sac. This custom built luxurious 8 bedroom 9 bathroom family home features wide plank hardwood throughout main areas. All upper bedrooms have their own ensuite. Grand gourmet kitchen with a dream island, custom built-in appliances plus a separate spice kitchen. Nannie suite on the main floor. 20 foot ceilings grace both the living room and great room. The daylight lower level features a bar, bedrooms, gym, theatre, family rooms and walk out deck. All 3 floors are easily accessed by the elevator or the beautiful open staircase. VIRTUALLY STAGED

KEY INFORMATION

MLS® R2910955

Residential Detached

Northeast Maple Ridge

8 Bedrooms

9 Bathrooms

9,036 SF

69,652 SF Lot

FEATURES

Year Built: 2024

Views: FORESTED PARK AND CONSERVATION

Listed By: Royal LePage - Brookside Realty

