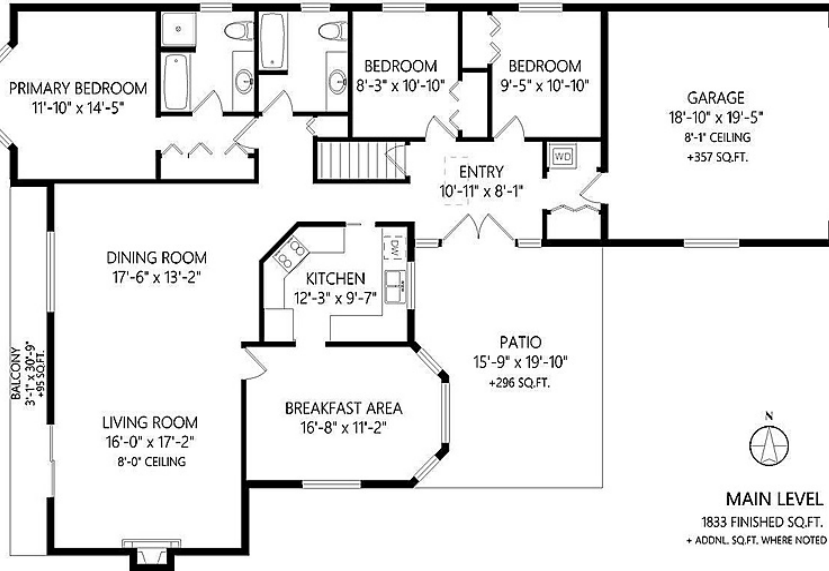


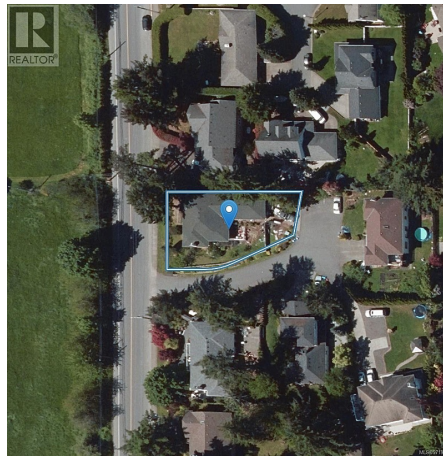
E 6599 Central Saanich Rd, Central Saanich

\$1,199,000



ACCEPTED OFFER. Two spacious independent 3 bedroom suites, ideal for multi generation families, a healthy mortgage helper or two rental units. Great investment as businesses move into the Keating business park supported by the new Pat Bay Highway overpass. Each suite features 3 bedrooms, full sized laundry and private garden/deck space. The upper suite includes a gas fireplace and primary bedroom ensuite with jet tub. The home looks West over ALR land and features soundproofing between the suites, a new hot water tank, 40 year roof with warranty, newer flooring throughout, mature trees including cherry and plum, a double car garage and additional parking in the private cul-de-sac. Tanner ridge is a fantastic neighbourhood with easy access to schools, lakes, parks/trails, and local farmstands, and is a short bus/drive to downtown, Sidney, Swartz Bay Ferry, YYJ airport and Saan Pen Hospital. The simple bare land strata has a healthy contingency fund and meets once yearly. Pre-home inspection available. (id:56120)

MLS®971928



KEY INFORMATION

MLS® 971928

Residential Detached

Tanner

6 Bedrooms

3 Bathrooms

3,963 SF

7,546 SF Lot

FEATURES

Year Built: 1992

Listed By: RE/MAX Camosun

