

B2c3 3588 Wayburne Drive, Burnaby

\$1,336,000



Spacious 3 & 4 bedroom townhome in central Burnaby. Our community features a collection of 130 townhomes located just east of BCIT in Burnaby, and only 8-minutes away from T&T, Walmart, Costco, Brentwood mall & SkyTrain station and Metrotown mall & SkyTrain station! This Courtyard Collection is offering an almost 1350 sqft, 3-bed + den or 1440 sqft, 4-bed, three-level townhome. All three-level are indoor space (Not parking on main level floor). Three-outdoor spaces - 1 patio & 2 balconies - to entertain your guest & your family! Amenities include air conditioning, pre-wired EV charging, pet-friendly spaces, a pet wash, a car wash, and no split entry staircases. Our Presentation Center Showroom Address is at 5648 Imperial St, Burnaby. Up to \$35,000 Cash Discount for a Limited Time.

KEY INFORMATION

MLS® R2911679

Residential Attached

Greentree Village

3 Bedrooms

3 Bathrooms

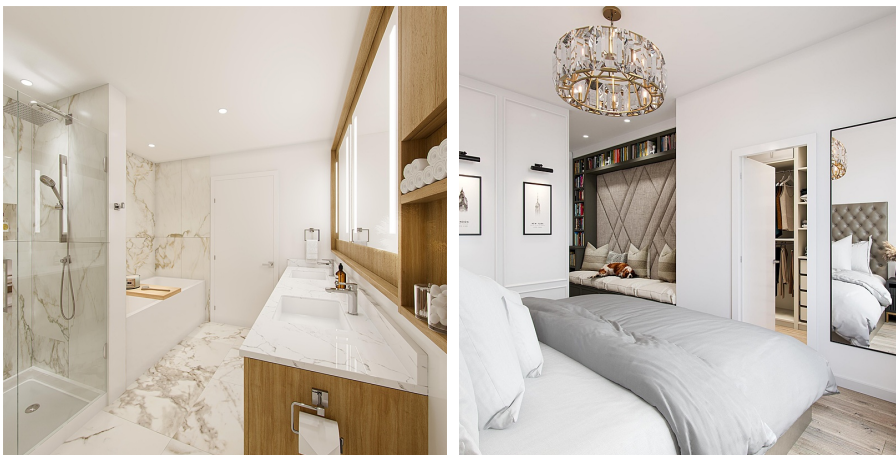
1,349 SF

FEATURES

Year Built: 2025

Views: MOUNTAIN

Listed By: Jovi Realty Inc.



rennie