

# 209 3451 Springfield Drive, Richmond

\$599,999



Absolutely Gorgeous fully updated 2 bed 1.5 bath walking distance to Steveston Village. Stunning updates include: New Stainless appliances with French door fridge, Country style vinyl flooring, designer tiles, new light fixtures and 2 beautifully updated bathrooms with lots of storage. Waking distance to the bus route, shopping and all Steveston Village amenities. Complex fully rain screened, updated windows, sliding doors, balconies, new intercom and updated elevator. Amenities include a Refreshing Outdoor Pool, Party Room, Guest Suite, Storage locker, Bike Room and an excellent laundry facility. The unit has 1 designated parking and storage, potential 2nd parking can be rented from strata. \*Bonus: New roof recently installed and fully paid for. Some photos virtually staged.

## KEY INFORMATION

MLS® R2911861

Residential Attached

Steveston North

2 Bedrooms

2 Bathrooms

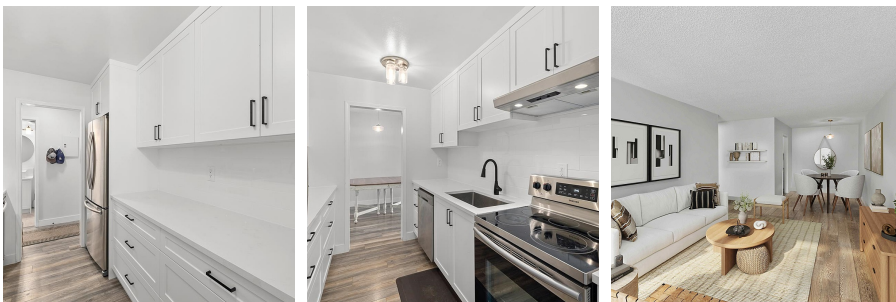
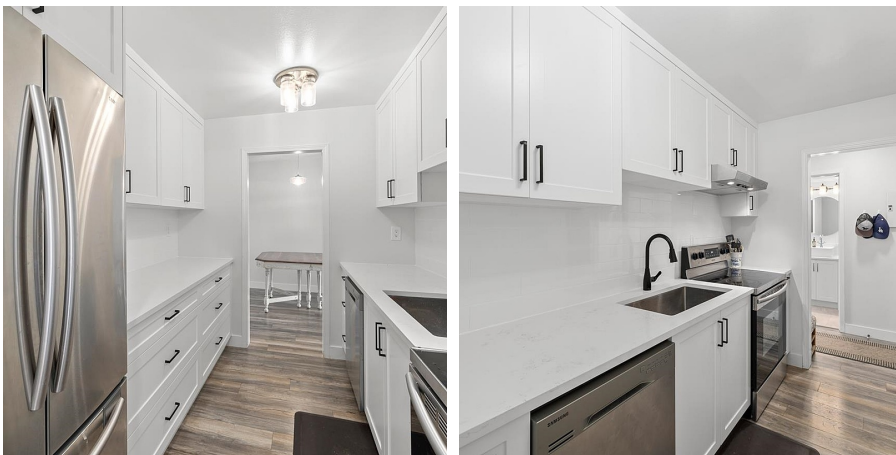
922 SF

\$427.91 Maintenance Fees

## FEATURES

Year Built: 1971

Listed By: Macdonald Realty Westmar



rennie