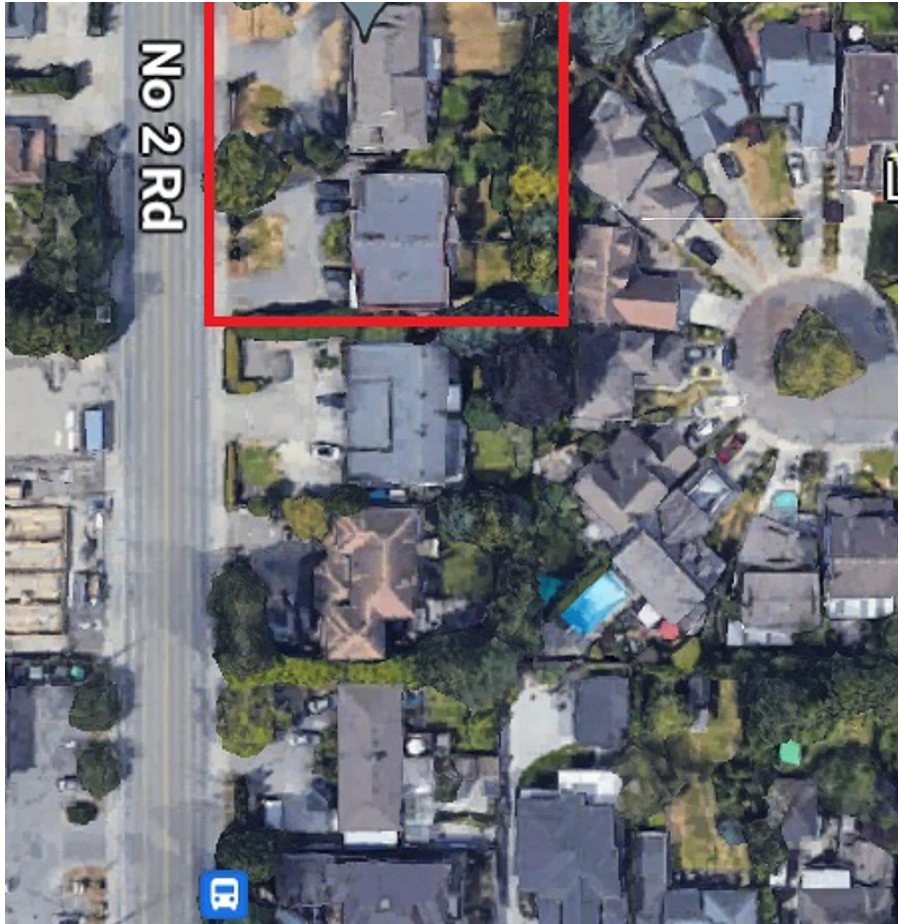


# 9360 No. 2 Road, Richmond

\$1,999,000



Investors alert! Rare available opportunity to own and develop a complex of multi homes. Land assembly of 9340/9342/9360/9362 No. 2 Road. Land size of this property is 41.5'x 150'=6210sf. Total land size is 165'W x 150'L =24750SF. Richmond OCP allows rezoning for Townhouses and new zoning bylaws permits more choices of Small-Scale Multi-Unit Housing. Great school catchment, great community, bus stop nearby . easy access to city centre, airport and other area of Great Vancouver. 3 bdrm suite upstairs and 2 bdrm downstairs, well maintained. Could be leased over \$5000/month. Don't miss it!

## KEY INFORMATION

MLS® R2911846

Residential Attached

Woodwards

5 Bedrooms

3 Bathrooms

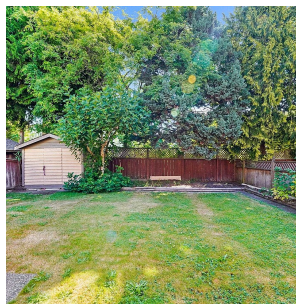
2,310 SF

6,210 SF Lot

## FEATURES

Year Built: 1972

Listed By: Unilife Realty Inc.



rennie