

28385 Elsie Road, Abbotsford

\$1,340,000



3.72 acres located at the end of Elsie Road, this quiet location offers amazing privacy, is close to Bradner Elementary school, Post Office and Bradner store. If searching for the ultimate piece of land in the community of Bradner you will definitely want to have a look at this one. Current home is a tear down and not currently livable. Bring your house plans and start putting down roots. Detached shop with solid concrete slab.

KEY INFORMATION

MLS® R2911034

Residential Detached

Bradner

2 Bedrooms

1 Bathroom

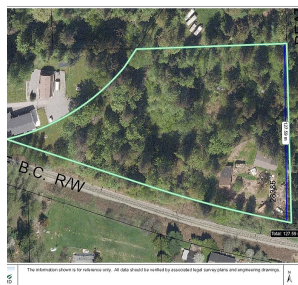
1,100 SF

162,043 SF Lot

FEATURES

Year Built: 9999

Listed By: Royal LePage Little Oak Realty



rennie