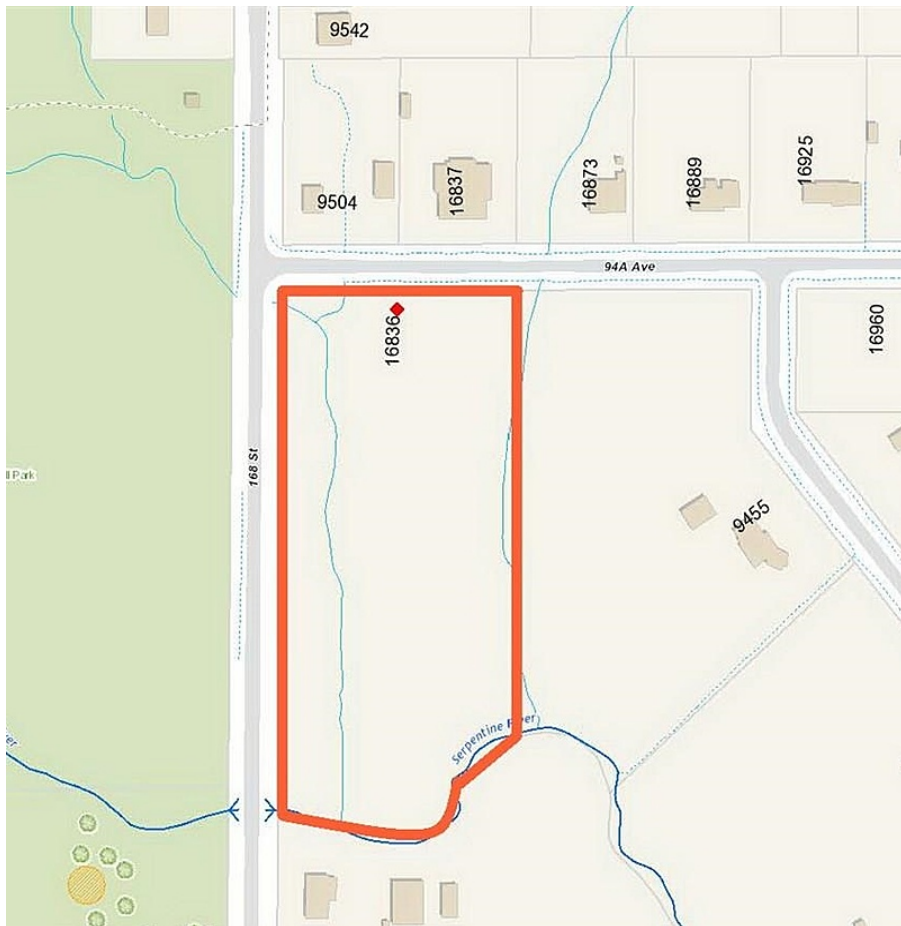


16836 94a Avenue, Surrey

\$3,680,000



5.79 acres (342'x736') double zoning RA+A1 (Residential Acreage + General Agriculture). Not in ALR. Corner of 168 Street and 94A Avenue. RA zoning (59516 SF). Creeks running through the property offers tranquil and private environment. Build your mansion to accommodate a big family. Across street from Bothwell Park and Tynehead Park. Short drive to rec centre, Hwy access and shopping.

KEY INFORMATION

MLS® R2911906

Land Only

Fleetwood Tynehead

0 Bedrooms

0 Bathrooms

0 SF

FEATURES

Listed By: Royal LePage West Real Estate Services

