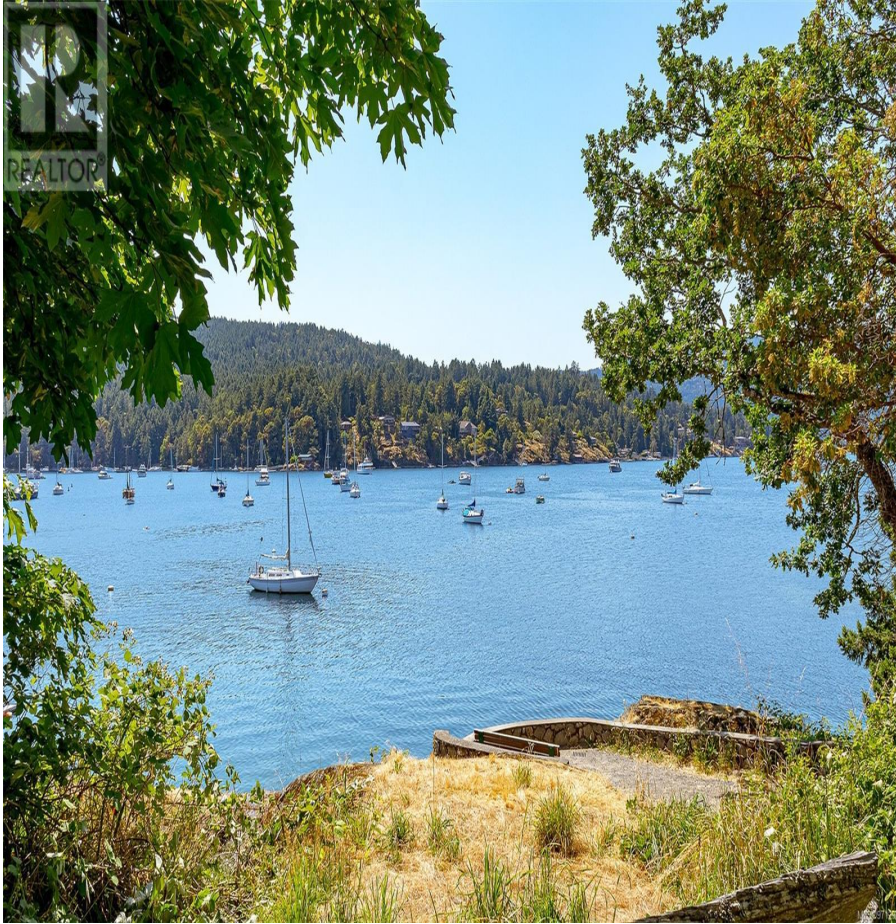


# 7430 Mark Lane, Central Saanich

\$1,445,000



Exceptionally rare low-bank oceanfront property in idyllic Willis Point. Expansive ocean views and dock with Foreshore rights. The 2036 sq. ft. 3 or 4 bedroom home has a great open floor plan that takes advantage of the panoramic views of Brentwood Bay and the Saanich Inlet. The living room, oversized primary bedroom with ensuite, second and third bedrooms all open onto the expansive deck. Freshly painted throughout with new carpets in the bedrooms. Tranquil living close to Gowland Park, just 15 minutes to schools and groceries, 30 minutes to either Victoria or Sidney....Feel like you're on vacation 365 days a year! Move in ready yet priced for the new owner to make this property their own dream home. (id:56120)

## KEY INFORMATION

MLS® 971294

Residential Detached

Willis Point

4 Bedrooms

2 Bathrooms

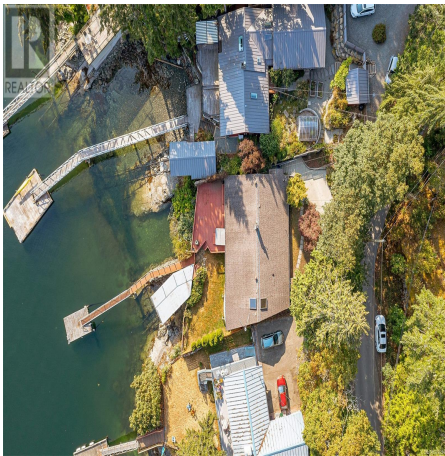
2,036 SF

6,678 SF Lot

## FEATURES

Year Built: 1955

Listed By: RE/MAX Generation



rennie