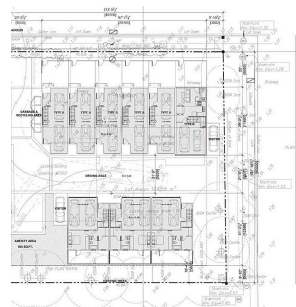
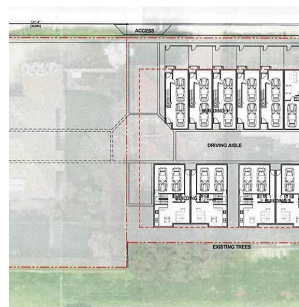


6560 Williams Road, Richmond

\$2,625,000



Developer's Alert!! Do not miss the chance to have the townhouse development lot in the central Richmond area right beside Steveston London Secondary School. It is assembled at 6520, 6560 and 6580 Williams Road Richmond. The total lot size is 35,446.05 sf. with 0.6 FSR. Rezoning Application has been done for 16 units of townhouses.

KEY INFORMATION

MLS® R2913150

Residential Detached

Woodwards

7 Bedrooms

5 Bathrooms

3,639 SF

8,714 SF Lot

FEATURES

Year Built: 1993

Listed By: RE/MAX Crest Realty

rennie