

109 1948 Coquitlam Avenue, Port Coquitlam

\$489,800



This corner unit boasts a spacious 2 bedroom, charming walk-out patio that can be used as a second entrance. Building upgrades approved & fully covered by strata, encompassing exterior, decks, & gutters, ensuring a modern aesthetic. Effortless parking with included underground space & ample street options. Located in a vibrant urban hub + mere blocks from Lougheed Highway & WestCoast Express.

KEY INFORMATION

MLS® R2913078

Residential Attached

Glenwood

2 Bedrooms

1 Bathroom

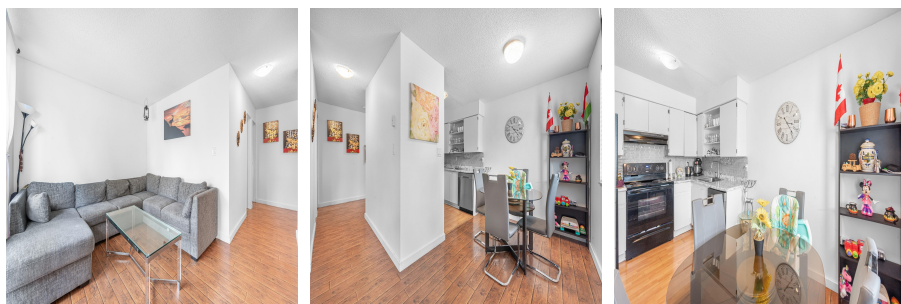
735 SF

\$431.66 Maintenance Fees

FEATURES

Year Built: 1982

Listed By: Sutton Centre Realty



rennie