

223 9371 Hemlock Drive, Richmond

\$948,000



Rare 2 bdrm + 2 bath corner unit in prestigious 'Mandalay' -- a luxury concrete low rise by Cressey. This 1,075 sq ft home features an incredible open floor plan with floor to ceiling windows & North/East garden views from two balconies. Unit is fitted with stainless steel appliances, engineer hardwood floors, granite countertops, an electric fireplace & new painting. The master bedroom features an ensuite & a walk-in closet. Building amenities include an indoor pool with steam room & sauna, exercise centre & luxurious 6,600 sq ft clubhouse with an outdoor BBQ area. Steps away from 21 acre Garden City Park, Henry Anderson Elementary School, a few minutes to MacNeil Secondary School. Walking distance to Richmond Centre.

KEY INFORMATION

MLS® R2913285

Residential Attached

Mc Lennan North

2 Bedrooms

2 Bathrooms

1,075 SF

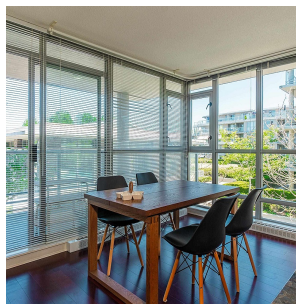
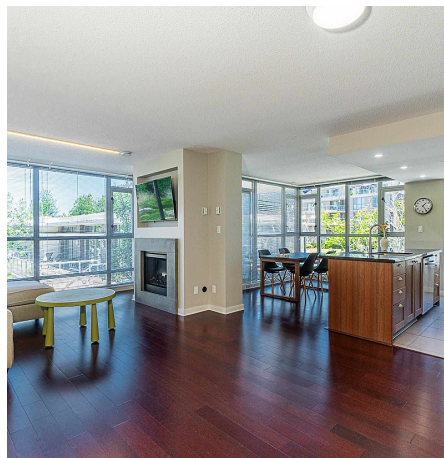
\$627.00 Maintenance Fees

FEATURES

Year Built: 2009

Views: COURTYARD, MOUNTAIN

Listed By: Pacific Evergreen Realty Ltd.



rennie