

12535 264 Street, Maple Ridge

\$3,580,000



Fantastic West Coast custom built home located on the best street in Whispering Fall at the end of a private cul-de-sac. This luxury home has 5 bdrm, 6 bthrm, grand staircase, "Great room" with vaulted ceiling, master on the main flr with spa inspired ensuite. Dining room with Butler's pantry, gourmet kitchen with massive granite island, SS appl. including Sub Zero fridge!. Upstairs has 3 bedrooms with a huge games room (you can make it a second master bedroom). Downstairs has a lot of storage rooms with a huge bedroom/office & enormous rec. room. The 6 bay garage can store all the toys plus vast RV side parking. Private backyard & greenbelt. 6 mins to Meadow Ridge School. THE PROPERTY IS LEASED BY FIXED TERM UNTIL MAY 31, 2025. Open House Sep 28th, Sat 2:00 to 4:00 pm.

KEY INFORMATION

MLS® R2913073

Residential Detached

Websters Corners

5 Bedrooms

6 Bathrooms

6,601 SF

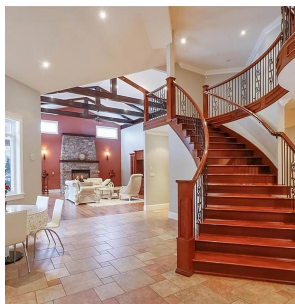
42,906 SF Lot

FEATURES

Year Built: 2006

Views: Greenbelt

Listed By: RE/MAX City Realty



rennie