

# 413 163 175a Street, Surrey

\$809,999



Assignment of Contract - This big and bright 2 bedroom 2 bathroom corner unit is located at Douglas Green Living. A new community of 64 condos and 28 townhomes that feature modern kitchens, high end appliances, garburators, Quartz countertops with under-mount double bowl stainless steel sinks, elegant tile back-splashes and sleek cabinets with soft-touch close technology. Located in a quiet local community, walking distance to Douglas Elementary and Beautiful Family Parks with only a 5 min drive to White Rock Beach, shopping, restaurants and grocery stores. **BONUS \$5,000.00 DECORATING ALLOWANCE ON THE PURCHASE OF THIS HOME PAID BY DEVELOPER UPON COMPLETION.** 1 Parking and 1 Storage locker included. The estimated completion date is March 2025.

## KEY INFORMATION

MLS® R2913965

Residential Attached

Pacific Douglas

2 Bedrooms

2 Bathrooms

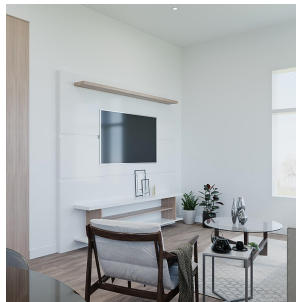
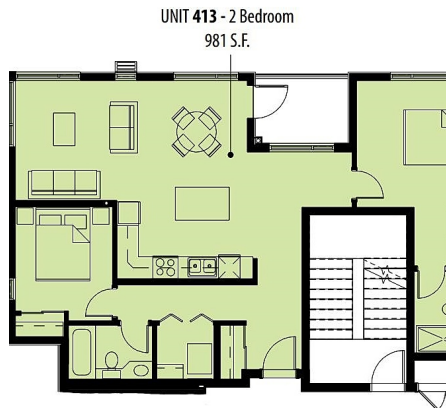
981 SF

\$0.00 Maintenance Fees

## FEATURES

Year Built: 2024

Listed By: Oakwyn Realty Encore



rennie