

# 11 4000 Sunstone Way, Pemberton

\$1,598,000



Discover this elegant, spacious duplex with an open-concept layout, designer finishes, and an expansive deck offering unobstructed mountain views. Ideal for active Pemberton lifestyles, Elevate duplexes are perfect for growing families or a weekend retreat, with ample space for entertaining. Built to BC Energy Code Step 4 standards, these homes ensure energy efficiency. Enjoy easy access to hiking and biking trails from your doorstep. Additional upgrades include a custom GoldBarr garage, built-in family room bar, wine fridge, dining bench with storage, EV charger, and hot tub. Still under 2-5-10 warranty (Nov 1, 2022). NO GST

## KEY INFORMATION

MLS® R2915235

Residential Attached

Pemberton

3 Bedrooms

3 Bathrooms

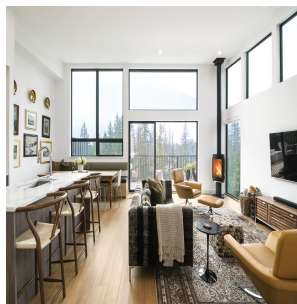
2,200 SF

## FEATURES

Year Built: 2022

Views: Mount Currie

Listed By: rennie & associates realty ltd.



**Brandon Price** PREC\*  
604.765.9555  
bprice@rennie.com  
rennie.com/brandanprice

**rennie**