

Lot 2 & 4 Willis Point Rd, Central Saanich

\$5,500,000



Combined 72.61 acres of rare non-ALR Saanich Peninsula land 20 min from Victoria bordering parkland with ocean views of Tod Inlet, Saanich Inlet, Brentwood Bay, Butchart gardens, and the banks of the malahat. Located in Central Saanich; a semi-rural community of hobby/working farms & vineyards with Canada's most temperate climate. Secondary suites & accessory buildings allowed, with multiple road/approach possibilities available, as well as hydro & cable on Willis Point Road lot line. Well drilled & approved for septic. This represents a last of its kind opportunity in South BC; likely never available again in present untouched, pristine state. Zoned RC with extremely low taxes and flexible opportunities for building & development on land with significant timber volumes in prime growing area for additional value every year. The world's finest estate properties created on similar, last remaining, one of a kind properties. (id:56120)

KEY INFORMATION

MLS® 973225

Land Only

Willis Point

0 Bedrooms

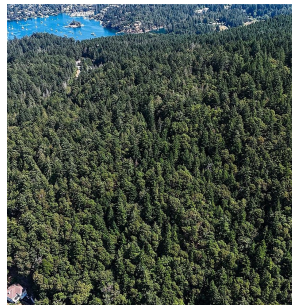
0 Bathrooms

0 SF

3,162,897 SF Lot

FEATURES

Listed By: Sotheby's International Realty Canada



rennie