

1080 San Marino Cres, Saanich

\$1,200,000



Situated on a large 9,336 sq. ft. corner lot, this recently updated property features 2 bedrooms and 1 bath on the upper level, as well as a 2-bedroom, 1-bath lower suite. Ideal for both starter families and investors, the upper level offers comfortable family living, while the lower suite presents a lucrative opportunity to offset mortgage costs or generate reliable rental income.

Alternatively, investors can capitalize on renting out the entire property, which currently totals \$4,600 in monthly income. Additionally, the detached garage has been converted into a studio with a Murphy bed for extra guests but could also serve as a home gym or be transformed into a coach house, enhancing the revenue potential. Located near Cedar Hill Golf Course, Swan Lake, Playfair Park, and just 10 minutes from the University of Victoria, everything you need for convenience and leisure is at your fingertips. (id:56120)

KEY INFORMATION

MLS® 973467

Residential Detached

Quadra

4 Bedrooms

2 Bathrooms

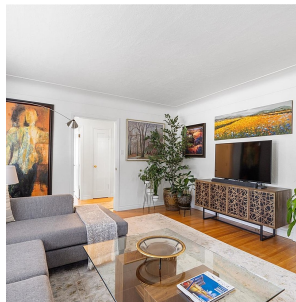
3,214 SF

9,336 SF Lot

FEATURES

Year Built: 1946

Listed By: rennie & associates realty ltd.



Haylie Leote
250.891.7442
hleote@rennie.com
rennie.com/haylieleote

rennie