

3707 4890 Lougheed Highway, Burnaby

\$1,590,000



AMAZING views on the 37th floor! This stunning 1,265 sq. ft. 3 Bed 3 Bath North/east/south CORNER home boasts unobstructed panoramic views of the city & mountains. Enjoy seamless indoor/outdoor living accessing 600 sq. ft. of covered & heated wrap around balcony. Premium finishes with A/C, electric roller shades, Bosch appliances w/ gas cooking, laundry room, & closet organizers. World-class hotel style amenities with 24/7 concierge services. Steps from Brentwood Mall and skytrain station. 2 EV Parking & 1 Locker included. 2-5-10 warranty. Must see!

KEY INFORMATION

MLS® R2916948

Residential Attached

Brentwood Park

3 Bedrooms

3 Bathrooms

1,265 SF

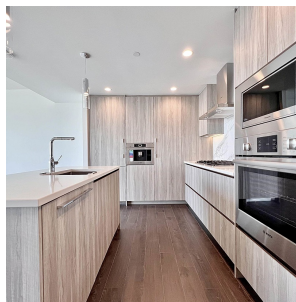
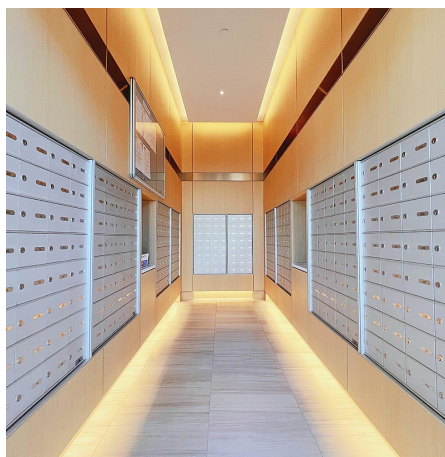
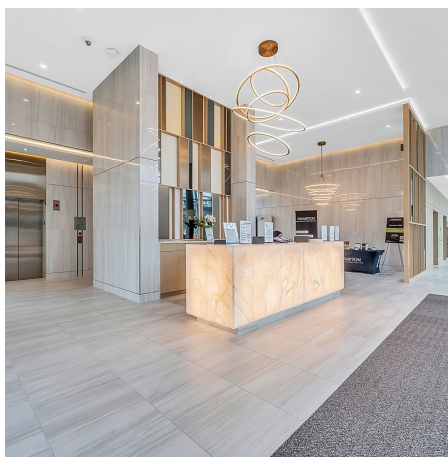
\$730.45 Maintenance Fees

FEATURES

Year Built: 2024

Views: Mountains & City

Listed By: rennie & associates realty ltd.



Emily Yu
604.218.6786
eyu@rennie.com
rennie.com/emilyyu

rennie