

1985 Pitt River Road, Port Coquitlam

\$3,188,000



RARELY AVAILABLE...Mixed use commercial/residential in Port Coquitlam. Unique opportunity and a perfect investment property as both Commercial area and Residential area are rented out. This corner lot with a back lane is the perfect location in the center of it all. Residence features four bedrooms, 2 bathroom with a private deck. Don't miss out on this investment!

KEY INFORMATION

MLS® R2917016

Residential Detached

Lower Mary Hill

0 Bedrooms

1 Bathroom

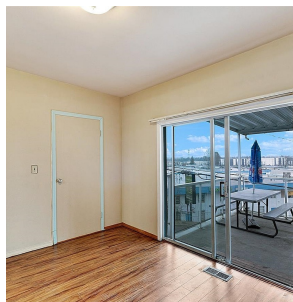
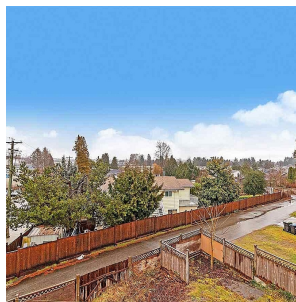
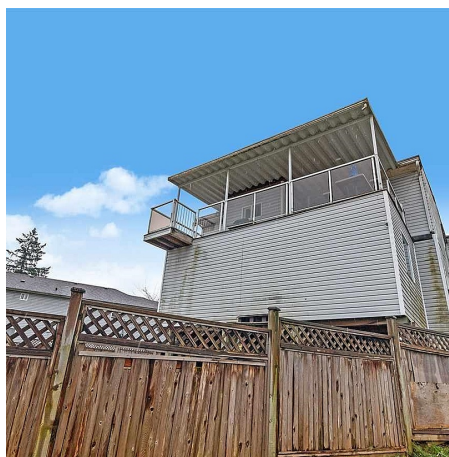
3,036 SF

7,956 SF Lot

FEATURES

Year Built: 1948

Listed By: Sutton Group-West Coast Realty (Langley)



rennie