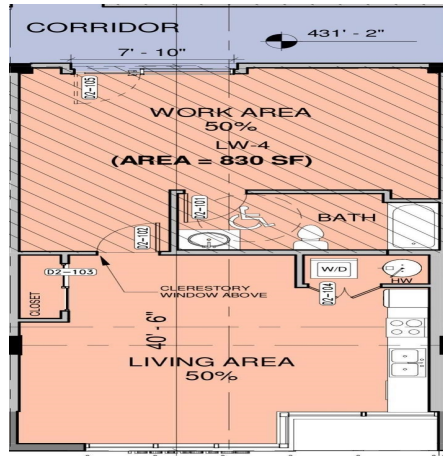


# 204 5535 Hasting Street Street, Burnaby

\$1,240,000



A rare opportunity to enjoy a LIVE/WORKSPACE with 24-hour concierge service in Alto on Capitol Hill In Burnaby on Hasting St and Ellesmere Avenue. This development includes a 4-story wood-frame low-rise with 2 levels of parking, offering 20 luxury condos, 11 live-work units and 5 commercial retail units. Homes will vary from studio, 1-, 2- and 3-bedroom units and range from 828 to 1170 square feet. Residents will share a meeting room and a landscaped rooftop deck with lounge seating on site. Alto on Capitol Hill is a family-friendly location that is walking distance to Capitol Hill Elementary, Burnaby North Secondary schools & Kensington Park and Close to SFU.

## KEY INFORMATION

MLS® R2913368

Residential Attached

Capitol Hill

0 Bedrooms

1 Bathroom

830 SF

\$242.00 Maintenance Fees

## FEATURES

Year Built: 2024

Listed By: YPA Your Property Agent

rennie