

A1 3031 St Anton Way, Whistler

\$1,499,000



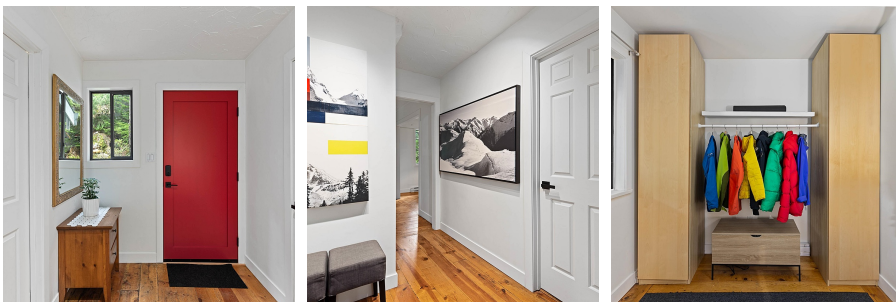
Rare Gem: Fully Detached 3-bedroom Home in the Iconic St. Anton Village. This meticulously maintained 2-story residence boasts a stylish interior and work space, along with a recently updated bathroom. Situated in the prime location within the complex, offering privacy and an irrigated garden patio for entertaining. New metal roofs installed in 2018, ample storage space for all your seasonal gear. In the summer months, take a refreshing dip in Alta Lake, just a 4 min walk. Short stroll to Whistler Village, leave your car at home as the valley trail is at your doorstep. Enjoy the best of mountain living in this exceptional property.

KEY INFORMATION

MLS® R2917785
Residential Attached
Alta Vista
3 Bedrooms
2 Bathrooms
1,130 SF

FEATURES

Year Built: 1973
Views: Mountain
Listed By: Angell Hasman & Associates Realty Ltd.



rennie