

127 12711 64 Avenue, Surrey

\$849,900



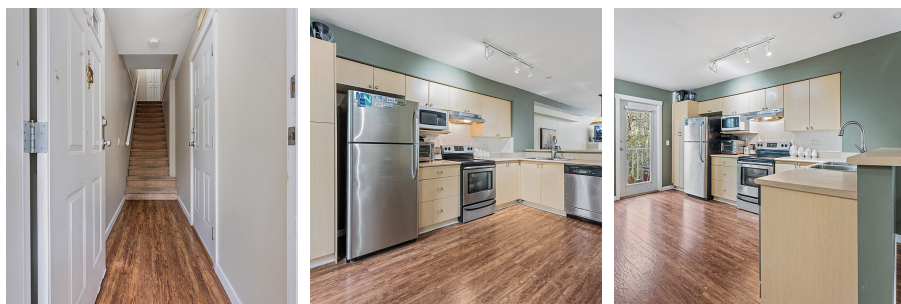
Welcome to Palette on the Park. This well maintained 3bed/2bath 1500+ sq foot home is the right home for your family. Fantastic open concept layout on main floor with livingroom and family room, large kitchen and dining room. Home features laminate flooring on main floor, s/s appliances, private setting in the backyard and lots of natural light. 3 good size bedrooms upstairs with double sink in master. PARK NEARBY. Close to transit, schools and shopping. Well run complex with a good amount of contingency fund. Home is a must see!

KEY INFORMATION

MLS® R2917548
Residential Attached
Panorama Ridge
3 Bedrooms
2 Bathrooms
1,533 SF

FEATURES

Year Built: 2004
Listed By: RE/MAX Performance Realty



rennie