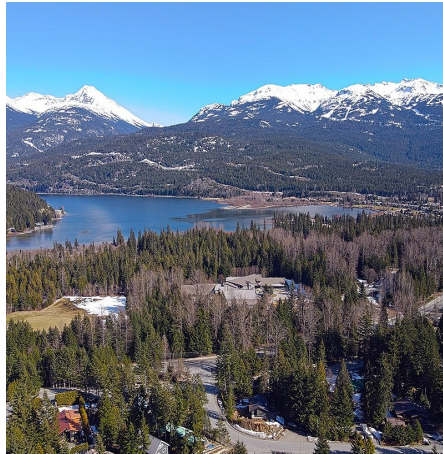
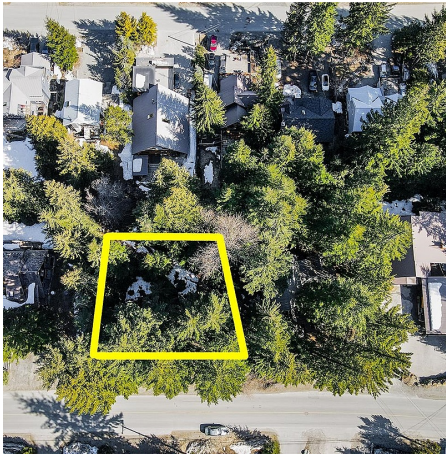


8270 Mountain View Drive, Whistler

\$2,490,000



Nestled within the highly sought-after Alpine Meadows neighborhood, this exceptional 14,300-square-foot lot is a rare find, offering a blank canvas for your dream home. Envision waking up to stunning mountain vistas and the soothing sounds of your own private creek, all while being immersed in the breathtaking natural beauty that defines this area. This prime location combines tranquility with convenience, placing you just moments away from the high school, recreation center, local cafes, and all the modern amenities essential for a comfortable lifestyle. This property offers the potential to build up to a 5,000-square-foot masterpiece tailored to your vision of mountain living. Additionally, recent legislative changes allow for even more flexibility to maximize this exceptional lot.

KEY INFORMATION

MLS® R2917922

Land Only

Alpine Meadows

0 Bedrooms

0 Bathrooms

0 SF

14,300 SF Lot

FEATURES

Views: Mountain View

Listed By: RE/MAX Sea to Sky Real Estate

rennie