

# 1960 Watson St, Saanich

\$1,850,000



Beautiful, unique character home in a great location with views south over the city? A noted home in Saanich, perched on the Lansdowne Slope, and known as the "Porter Residence", is ready for a new family. Set on a large 12,000 s.f. lot & crafted in 1940, brick construction, prominent bay window, arched room entrances, classic millwork such as the feature fireplace/mantle & careful updates including the kitchen with its custom banquette. Spacious and bright, the main floor also features a large bedroom. Upper floor has 4 generous bedrooms & updated baths. Lower level has a large family room with fireplace, lots of storage & additional 1 bed accommodation ideal for student or extended family. EV charger in place. Newer roof/gutters, gas furnace (2022), 200-amp service, south facing windows replaced (2023) and more. (id:56120)

## KEY INFORMATION

MLS® 973986

Residential Detached

Camosun

6 Bedrooms

4 Bathrooms

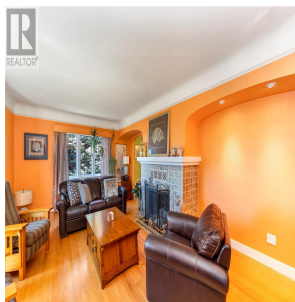
3,549 SF

12,017 SF Lot

## FEATURES

Year Built: 1940

Listed By: DFH Real Estate Ltd.



rennie